

# ROUSH®

POWER | HANDLING | STYLING



800.59.ROUSH  
ROUSHperformance.com  
ROUSHtv.com



PARTS CATALOG  
Vol. 7



**CONTENTS**

Introduction.....	02	Exhaust.....	52
ROUSH Company.....	04	Interior.....	58
ROUSH Road Crew.....	06	Brakes.....	68
Performance Partners .....	08	Wheels.....	72
Powertrain.....	10	Accessories.....	76
Body .....	22	Service Parts.....	88
Stripes and Graphics .....	32	ROUSH Gear.....	90
Suspension.....	46	General Information.....	100

# JACK ROUSH

## AN AMERICAN LEGEND

*I have a passion for all things performance, whether that is on the highway, the racetrack, or the sky (you probably know my affection for airplanes, especially the World War II warbirds). You too must share these same passions, at least on the automotive side.*

*Passion is a great word to describe ROUSH Performance and the people that work there. They share your passion for high-performance vehicles, whether they are built in our Livonia, Mich., assembly area or someone's garage. The Customer Service Department is staffed by former technicians who have built hundreds of ROUSH Mustangs and F-150 trucks so they literally know them inside and out. The engineers have a passion to match OEM specs in quality and durability, and a passion to design the finest products in the industry.*

*The word passion can also be used to describe the members of the new ROUSH Road Crew, the official club for owners and fans of the fast lane. These people are some of the best ambassadors we have for the brand, and are as passionate as we are about ROUSH. There are plenty of events planned around the country to hang out and have fun with like-minded people, so consider joining the RRC today, if you haven't already (see page 6 for details).*

*For those who have a passion for horsepower, the new line of phased R2300 ROUSHchargers will get your heart beating faster. For the first time, owners can jump in at any level of horsepower as the budget and desire allows. Start at the Phase 1 base and increase the performance over time, or go all the way to Phase 3 with 625 horsepower right off the bat. The ROUSHcharger has long been the industry standard, and now there are more choices to help your passion for horsepower grow.*

*There are a lot of things happening at ROUSH these days, and we're glad to have you as part of the family. If you ever have any questions or need more information on our line of vehicles, parts, engines or the ROUSH Install Center, call 800-59-ROUSH or visit our web site at [www.ROUSHperformance.com](http://www.ROUSHperformance.com).*

*Jack Roush  
USA*

The Roush Fenway Racing trademarks used by authority of Roush Fenway Racing, LLC.

# ROUSH COMPANY

**I**t's hard to believe, but Roush was founded way back during the bicentennial; in 1976 the company was known as Jack Roush Performance Engineering. Since then, it has grown to become a worldwide enterprise with more than 2,000 employees and buildings spread across the United States and other countries worldwide.

From the intense competition of the race track and the global automotive marketplace to precisely manufactured products for the life sciences industry, the companies that comprise Roush Enterprises share a passion for performance and a laser focus on success. Today's intensely competitive market demands that exciting products get delivered to market quickly and economically. Roush, with a comprehensive portfolio of services ranging from motorsports management to product design, engineering, testing, and manufacturing, is uniquely qualified to meet that demand. For over 35 years, we have combined seamlessly integrated services with sophisticated program management tools to provide our global customers the assurance of quality, value, and technical expertise. ■

## ROUSH PERFORMANCE PRODUCTS MISSION STATEMENT

**O**ur mission statement is quite simple. It is our guiding light each day, and reads:

ROUSH Performance Products strives to be the world's best manufacturer and distributor of integrated performance automobiles and specialty equipment.

Definition: "Best" — The most effective product, at the most competitive price, with the most user-friendly features.

As stewards of one of the world's most relevant performance brands, it is our obligation to ensure that the products carrying the ROUSH brand are safe, reliable, and refined. ■

The companies that comprise the Roush family include:

- **Roush** — A leading supplier of integrated engineering, prototyping, testing and manufacturing services.
- **Roush Fenway Racing** — As the winningest team in racing, they are able to offer the most diverse, effective, and value-laden motorsports marketing platforms.
- **Roush Life Sciences** — This division designs, develops and manufactures precision plastic products for diagnostic, laboratory and general medical applications.
- **ROUSH Performance** — The first specialty-vehicle company to combine race-proven technology with advanced automotive engineering.
- **Performance Assembly Solutions** — A full-service assembly supplier of niche and specialty powertrain modules for the transportation industry.

Roush is the only global supplier of engineering services to offer in-house expertise in areas ranging from body, chassis, powertrain, and NVH engineering through electrical systems engineering, thermal systems engineering, and CAE. The parts and vehicles that ROUSH Performance markets take advantage of the full range of company capabilities.

Many years ago, Jack Roush realized that the path to success is through vertical integration. The more steps in the process that you control, the better the product will turn out. With that in mind, he took the steps to create all the divisions necessary to produce the finest automotive parts and vehicles on the market.

Roush can create the design, develop the prototypes, engineer the mechanics, manufacture the pieces, assemble, and ship the finished goods. In many cases, there are no additional outside vendors needed.

The "Wheel of Capabilities" shown here offers just a glimpse into the full capabilities of Roush.





The ROUSH® Road Crew™ is the official club for owners and enthusiasts of ROUSH high-performance vehicles, parts, and crate engines.

## Interested? Join Today!



No matter what you like to do – hang out at a car show, cruise the roads, drive hard on the racetrack, participate in cool member-only events, or chat on the web – the ROUSH Road Crew will fuel your passion while in the company of like-minded people. You do not have to own a ROUSH vehicle to be a member. ■



### Membership comes with benefits:

- New member kit (personalized credential, RRC hat, and more)
- Annual ROUSH Road Crew window decal
- Access to specialized events
- Access to member-only forums and information
- 10% rebate on parts and apparel purchased through ROUSH Performance\*
- 15% discount on ROUSH Collection merchandise\*

\*Some exclusions apply

Membership in the ROUSH Road Crew is for anyone who enjoys life in the fast lane. With more than 18,000 specialty vehicles on the roads of America, ROUSH Performance has created a lifestyle club for the owners and fans of our products. The RRC offers a high level of interaction with ROUSH employees, exciting activities each year, and an open forum for information about the vehicles, parts, crate engines... everything that makes up the ROUSH Performance universe. ■

## 2011 Event Calendar

- |                        |  |
|------------------------|--|
| <b>January 8-9</b>     | Ford and Mustang Roundup at Silver Springs Ocala, FL ■ Show  |
| <b>February 19-20</b>  | Fords on Fourth & Cruise Tucson, AZ ■ Show & Cruise  |
| <b>March 5-6</b>       | Homestead Grand-Am Race & Cruise to the Keys Homestead, FL ■ Race & Cruise   |
| <b>April 9-10</b>      | Fabulous Fords Forever (at Knott's Berry Farms) & Special Event ■ Buena Park, CA ■ Event & Show  |
| <b>May 14-15</b>       | Pacific Northwest Event & Cruise Seattle, WA ■ TBD   |
| <b>May 21-22</b>       | Hooked on Driving (at Pocono) & Cruise Pocono, PA ■ Track & Cruise   |
| <b>June 3-5</b>        | Carlisle Ford Nationals ■ Carlisle, PA ■ Show  |
| <b>June 16-19</b>      | Rocky Mountain Mustang Roundup Steamboat Springs, CO ■ Multi   |
| <b>July 16-17</b>      | Track Event at Mid America Motorplex & Cruise Pacific Junction, IA ■ Track & Cruise  |
| <b>July 21-24</b>      | Mustang Week at Myrtle Beach Myrtle Beach, SC ■ Multi  |
| <b>August 5-7</b>      | Watkins Glen Tour & Finger Lakes Rally Watkins Glen, NY ■ Multi  |
| <b>August 18-20</b>    | ROUSHcharged™ Event: ROUSH Collection Open House, B79 Tour with Lunch, Cruise Event, and Woodward Dream Cruise ■ Metro Detroit, MI ■ Multi |
| <b>September 1-5</b>   | Sturgis Mustang Rally ■ Sturgis, SD ■ Multi  |
| <b>September 16-18</b> | Music City Track Day, Car Show & Cruise Nashville, TN ■ Multi  |
| <b>September 24-25</b> | Coronado Speed Festival ■ San Diego, CA ■ Event  |
| <b>October 1-2</b>     | MustangFest ■ Mustang Island, TX ■ Cruise & Show   |
| <b>October 2-3</b>     | Hooked on Driving (at Autobahn) & Cruise Joliet, IL ■ Track & Cruise   |
| <b>November</b>        | To Be Announced  |

\*Calendar subject to change

**ROUSHRoadCrew.com**  
**www.facebook.com/ROUSHRoadCrew**

## ROUSH Road Crew Club Membership Application

Annual ROUSH Road Crew Club Dues: \$35 (US Dollars)

Complete form and return with payment.

Return via fax to (734) 466-6940 or e-mail to [club@roush.com](mailto:club@roush.com)

Postal Mail: ROUSH Road Crew, 39555 Schoolcraft Road,  
Plymouth, MI 48170

Name: \_\_\_\_\_

Street: \_\_\_\_\_

City: \_\_\_\_\_ State/Prov: \_\_\_\_\_

ZIP/Postal Code: \_\_\_\_\_ Country: \_\_\_\_\_

E-mail: \_\_\_\_\_

Telephone: \_\_\_\_\_

Cell: \_\_\_\_\_

Birthday (Month/Day): \_\_\_\_ / \_\_\_\_

Do you own a ROUSH vehicle(s)? ☐ Yes ☐ No

If yes, what Year/Model(s): \_\_\_\_\_

## New Car Purchase?

☐ Join the Club, first year FREE!\*

\*Free first year membership in the ROUSH Road Crew with the purchase of a serialized ROUSH vehicle only, 2011 or 2012 model year. New members only, effective 2/1/11.

Date Purchased: \_\_\_\_/\_\_\_\_/\_\_\_\_ Last 8 of VIN: \_\_\_\_\_

Dealership: \_\_\_\_\_

## Payment Options

☐ Check ☐ Visa ☐ Mastercard ☐ AmEx

Name as it Appears on Card: \_\_\_\_\_

Credit Card #: \_\_\_\_\_

Security ID: \_\_\_\_\_

Expiration Date: \_\_\_\_ / \_\_\_\_ / \_\_\_\_

Signature: \_\_\_\_\_

## Online Application Available at: [www.ROUSHRoadCrew.com](http://www.ROUSHRoadCrew.com)

- A street address is required for shipping of membership packages. PO Boxes are not acceptable.
- ROUSH Road Crew membership numbers will be assigned in the order they are received.
- Forms returned without payment will not be processed.
- Payment must be made in US Dollars. Prices subject to change without notice.
- ROUSH reserves the right to approve or deny any membership application for any reason whatsoever.
- ROUSH reserves the right to terminate any approved membership at any time for any reason and without liability except reimbursement of terminated member's current membership dues.
- ROUSH does not sell, rent or lease its member lists to third parties. We may, from time to time, contact you on behalf of business partners about a particular offering that may be of interest to you.

# PERFORMANCE PARTNERS

## **R**OUGH Technical Expertise Crosses over Other Brands

ROUGH Performance has long stood as the pinnacle of high quality and high performance. The vehicles and parts sold by the company are the result of the best engineers in the industry, the most extensive testing to OEM specifications, and often thousands of man-hours of time sweating the details.

This same level of attention is now being used to evaluate third party brands. We will only bring in brands that stand among the highest quality in the industry. As a result of our initial evaluations, ROUSH will now be offering a selection of products from GoPro® (car-mounted video cameras), ESCORT® radar detectors, Mechanix Wear® gloves, and Ford Racing. These items will be available on the ROUSH Performance web site ([www.ROUSHperformance.com](http://www.ROUSHperformance.com)) and via our customer service phone lines (1-800-59-ROUSH).

No doubt people will ask "Why should I buy these parts from ROUSH?" That's a good question. Not only are we careful about selecting what products to offer, upholding the highest performance and quality standards in the industry, but we also have the most knowledgeable staff in the industry to help the customer at each step along the way. We are committed to helping you find the product that best fits your needs by offering the best information and advice possible.

Another question you might ask is "How can you claim that ROUSH's staff is any more knowledgeable than that of any other company?" Not only is there a passion for performance that comes straight from Jack Roush himself, but it runs through the DNA of all those who work here as well.

Our customer service representatives work at ROUSH because of the passion for what we do. Virtually all of them began their careers with ROUSH by working as mechanics on our vehicle assembly line and many spend their free time customizing their own vehicles. Quite literally, they know cars inside and out, and what works from personal experience because they have already installed it. Put simply, performance is what we do and who we are.

Look for more brands to join the ROUSH family as we expand our product offerings. We are always looking for brands that will complement those that ROUSH designs. "People can expect to see our product offerings grow considerably over the coming months," said Jack Roush, Jr., ROUSH Performance dealer and consumer marketing manager. ■



# POWERTRAIN

**W**orking in his family's garage as a small boy, Jack Roush has always had a passionate pursuit of horsepower. This has carried through his successful racing career and has shown itself as a key element to ROUSH Performance's offerings. The ROUSH powertrain kits provide for extreme power while balancing quality and reliability at the same time. You can increase horsepower with our industry-leading line of superchargers, called a ROUSHcharger, as well as with cold air intakes, pulleys, and belts. Or add the necessary robustness that your high horsepower vehicle requires with our clutches, driveshafts, belt tensioners, forged engine components, and more. ■

"If there is one thing that I know, it's how to maximize horsepower, and I've got a bunch of engineers at ROUSH dedicated to that same thing. But at ROUSH, it's more than just pumping raw horsepower from an engine. We look at what we can do to keep the engine running cool and strong for the life of the car each and every time you turn the key and hit the gas pedal. And, our ROUSHcharger features an industry leading 3-year, 36,000-mile powertrain warranty."

— Jack Roush



▶ PHASED R2300 ROUSHCHARGERS™

2005-2010 MUSTANG GT



This new innovative line of R2300 ROUSHchargers™ allows you to choose a core system (single belt or dual belt) and then choose where in the horsepower options you want to start. The single belt system is a lower cost option, while the dual belt system delivers more horsepower in the phase 3 kit. The great thing about these lines is that you can buy a Phase 1 system and upgrade to a higher phase later. Please note, however, that you can only upgrade within the given belt system that you originally purchased.

Single Belt vs. Dual Belt

This line has pioneered the use of the dual belt FEAD for use in R2300 ROUSHchargers™. This system provides a significant upgrade in robustness — allowing the system to confidently handle the higher levels of power found in the phase 2 and 3 systems. For those not intending on going with the dual belt phase 3 system, the single belt system is an economical package to handle the horsepower levels available in this format (475hp and 550hp).

Phased R2300 ROUSHchargers

ROUSH has long been recognized as the leader in Mustang powertrain development. Not only does ROUSH engineer the physical systems that can generate horsepower, but we are also leaders in the development of engine calibrations. This is a big reason why ROUSHchargers™ run so much better than competitors' superchargers. Now, for the first time, you can buy a R2300 ROUSHcharger™ with a calibration directly from ROUSH.

NOTE: Not legal for use in California or states that use a California EO#.

NOTE: Works on manual transmission vehicles only.

Upgrade Kits

A key feature of this line is the ability to upgrade your system to a higher phase within the given belt option.

Single Belt Upgrade Kits (Phase 1 to 2):

- ▶ 421101 2005-2009 Mustang
- ▶ 421109 2010 Mustang

Dual Belt Upgrade Kits:  
Phase 1 to 2

- ▶ 421105 2005-2009 Mustang
- ▶ 421113 2010 Mustang

Phase 2 to 3

- ▶ 421106 2005-2009 Mustang
- ▶ 421114 2010 Mustang

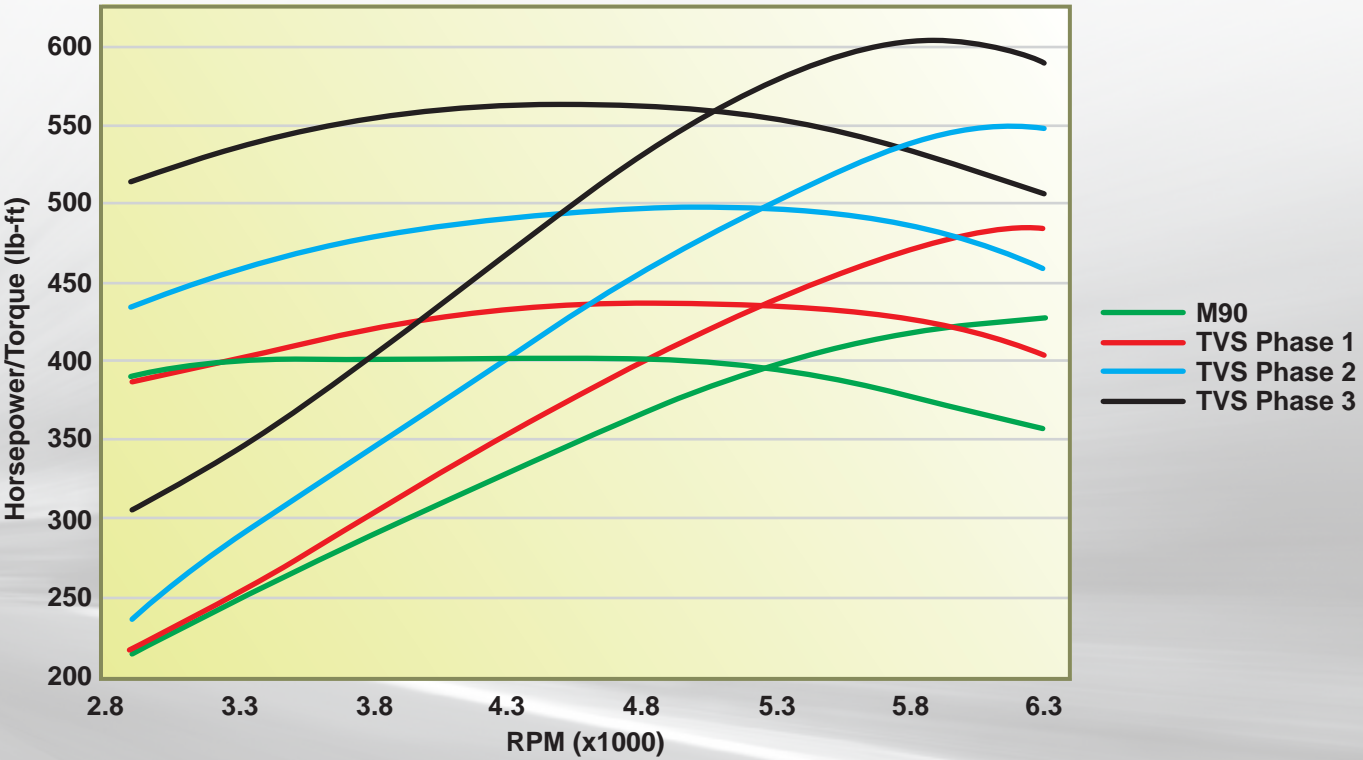
Warranty

Phase 1 and 2 R2300 Kits (both single and dual belt): 90 day warranty from retail purchase on ROUSH components only — No labor (standard ROUSH parts and accessories warranty).

Phase 3 Dual Belt Kit: a) 3 years or 36,000 miles from the vehicle's original in-service date (Warranty Start Date) as determined by Ford dealer OASIS (On-Line Service Information System) report (engine and labor covered), or b) On vehicles where the original manufacturer's 3 year or 36,000 mile warranty has expired, the warranty on the Phase 3 kit is 12 months or 12,000 miles from the retail purchase date on the Phase 3 Kit for ROUSH components only — no labor.

▶ PHASE DETAILS

	SINGLE BELT FEAD		DUAL BELT FEAD		
	SB Phase 1	SB Phase 2	DB Phase 1	DB Phase 2	DB Phase 3
Power	475 hp/435 lb-ft	550 hp/500 lb-ft	475 hp/435 lb-ft	550 hp/500 lb-ft	625 hp/565 lb-ft
2005-2009 Mustang Part #	421099	421100	421102	421103	421104
2010 Mustang Part #	421107	421108	421110	421111	421112
Bolt-On Pulley	Yes	Yes	Yes	Yes	Yes
Induction System	Yes	Yes	Yes	Yes	Yes
Intercooler	Yes	Yes	Yes	Yes	Yes
Fuel Charging Assembly	Yes	Yes	Yes	Yes	Yes
Wiring	Yes	Yes	Yes	Yes	Yes
Calibration	Yes	Yes	Yes	Yes	Yes
Pulley Size	105 mm	80 mm	89 mm	89 mm	73 mm
GT500 Fuel System Upgrade	No	Yes	No	Yes	Yes
Aluminum Flywheel	No	No	No	No	Yes
Performance Short Block	No	No	No	No	Yes
Warranty	90 day	90 day	90 day	90 day	3 Yr./36,000 Mile or 1 Yr./12,000 Mile Engine



▶ **FORD RACING GT500 SUPERCHARGER UPGRADE**  
2007-2009 FORD MUSTANG SHELBY GT500



Pushes the power of your engine to 605 hp with 554 lb-ft of torque while keeping a 1-year/12,000-mile drivetrain warranty (must be installed at a Ford Dealership to qualify). Also includes a cold air kit and a Ford Racing ProCal™ calibration tool.

Comes with a high-flow, large 6" conical filter and rotomolded airbox seals to the hood.

▶ **M-6066-SGT** Ford Mustang Shelby GT500 Supercharger Upgrade

▶ **ROUSH SUPERCHARGER KIT**  
2011-2012 MUSTANG GT 5.0L



The ROUSH 2011-2012 Mustang Supercharger Kit belongs to the TVS (Twin Vortices Series) line of superchargers developed by ROUSH that have set new standards for performance and reliability. The new Twin Vortices Series features new four-lobe rotors and high-flow inlet and outlet ports that greatly enhance thermal efficiency, enabling greater volumetric capacity at higher revolutions per minute (RPM).

The primary components of this 2011-2012 ROUSH TVS R2300 Supercharger Kit include:

- ROUSH TVS R2300 Roots-style supercharger
- 90mm supercharger pulley (generating approximately 7 PSI of boost)
- Upper and lower intake manifolds
- Air-to-water intercooler system
- Large intercooler low temp radiator
- High capacity intercooler degas bottle
- High-flow fuel rail with unique 47-lb fuel injectors
- Twin 60 mm throttle body
- Throttle body spacer
- ROUSH air induction system
- FEAD tensioner assembly
- All required wiring, harnesses, brackets, hoses and clamps
  - Available with or without ROUSH calibration (calibrated kit works with manual transmission vehicles only).
  - Calibrated kit is tuned for 525 hp and 465 lb-ft or torque.
  - Calibrated kit comes with ROUSH's industry leading 3-yr/36,000-mile warranty.
  - Non-calibrated kit is capable of making over 750 hp.

▶ **421140** Non-Calibrated  
**421142** Calibrated

▶ **ROUSH SUPERCHARGER KIT**  
2010 FORD MUSTANG GT



Brings the total power at the flywheel to 435 hp and 400 lb-ft of torque to 2010 Mustang GTs with the 4.6L, 3-valve V8 powertrain system. A new feature is the plug-and-play jumper harness. No wire splicing required. Simply connect wiring with user-friendly jacks. Includes all necessary hardware, brackets, fasteners, and instructions (no supplemental kit required). ROUSH maintains original vehicle 3-year/36,000-mile warranty, or one year on ROUSH components for vehicles already past their warranty date. This kit is C.A.R.B. EO approved.

Includes a ROUSH M90 Roots-style supercharger, intake manifold, air-to-water intercooler system, 73 mm supercharger pulley (generating 5 PSI of boost), and high-flow fuel injectors and induction system. In addition to this hardware, the key to maximizing performance is the upgraded ROUSH PCM calibration. ROUSHcharger owners must ship their PCM unit to ROUSH Performance for the necessary calibration (overnight return shipping is included for free).

▶ **420023** Black 2010 4.6L Ford Mustang GT Supercharger  
**420024** Chrome 2010 4.6L Ford Mustang Supercharger

▶ **ROUSH SUPERCHARGER KIT**  
2005-2009 FORD MUSTANG GT



Adds 135 hp and 80 lb-ft of torque at the flywheel with the 4.6L, 3-valve V8 powertrain system, bringing the total power to 435 hp and 400 lb-ft. Fits both manual and automatic vehicles and comes complete with all necessary hardware, brackets, fasteners, and instructions (no supplemental kit required). Please note that this kit only works for 2005-2009 model year Mustang GTs.

ROUSH maintains vehicle's original 3-year/36,000-mile factory drivetrain warranty, or one year on ROUSH components for vehicles already past their warranty date. This kit is also 50-state legal.

Includes a ROUSH M90 Roots-style supercharger, intake manifold, air-to-water intercooler system, 73 mm supercharger pulley (generating 5 PSI of boost), and high-flow fuel injectors and induction system. In addition to this hardware, the key to maximizing performance is the upgraded ROUSH PCM calibration. ROUSHcharger owners must ship their PCM unit to ROUSH Performance for the necessary calibration (overnight return shipping is included for free).

▶ **420112** 2005-2006 Ford Mustang GT (4.6L 3V), Black  
**420114** 2007-2008 Ford Mustang GT (4.6L 3V), Black  
**420116** 2009 Ford Mustang GT (4.6L 3V), Black

▶ **HEAVY DUTY 4.6L 3V BELT TENSIONER**  
2005-2010 FORD MUSTANG GT



Tensioner designed for heavy duty applications to handle the added rotational forces on the FEAD from supercharging. Same belt tensioner included in the 2010 ROUSHcharger kits, making it a replacement part for these packages:  
2010 Ford Mustang R2300 ROUSHcharger Kit (part #420026)  
2010 Ford Mustang R2300 ROUSHcharger Upgrade Kit (part #420027)  
2010 Ford Black Mustang GT ROUSHcharger (part #420023)  
2010 Ford Mustang Chrome ROUSHcharger (part #420024)

▶ **404225** Heavy Duty 4.6L 3V Belt Tensioner

▶ **UNDERDRIVE PULLEY**  
2005-2010 FORD MUSTANG GT



This underdrive pulley has a diameter that is 25% less than stock so 25% less power is diverted to running accessories. More power is freed for performance. Fits 2005-2010 Mustang GTs with 4.6L engine only, and does not work with ROUSHcharged vehicles.

▶ **401433** Ford Mustang GT Underdrive Pulley

▶ **ROUSHCHARGER INTERCOOLER LOW TEMP RADIATOR**  
2005-2009 FORD MUSTANG



Same intercooler low temp radiator included in both the M90 and R2300 ROUSHcharger kits for 2005-2009 Mustangs (part #404082, 403994, 420117, 420116, 420115, 420114, and 420113).

▶ **401745** ROUSHcharger Intercooler Low Temp Radiator

▶ **HIGH BOOST PRESSURE PULLEY**  
2005-2009 FORD MUSTANG GT



Add 15 more HP with the ROUSH 73 mm pulley kit. Replaces the standard ROUSHcharger pulley found on the older 415HP ROUSHcharger kit (part #401420 and 401981). Includes 73 mm pulley, installation instructions, and pre-paid overnight shipping box for calibration shipment. We will re-calibrate your PCM and ship it back to you overnight.

▶ **402863** High Boost Pressure Pulley for ROUSHcharger

▶ **ROUSHCHARGER INTERCOOLER LOW TEMP RADIATOR**  
2010-2012 MUSTANG



Same intercooler low temp radiator included in both the M90 and R2300 ROUSHcharger kits for 2010-2012 Mustangs.

▶ **421153** ROUSHcharger Intercooler Low Temp Radiator

▶ **SERPENTINE BELT**  
REPLACEMENT SERPENTINE BELTS FOR 2005-2012 ROUSH-CHARGED VEHICLES



Replacement part for Mustang M90 ROUSHchargers.

▶ **401967** 2005-2006 M90 (Stage 3/427R)  
**402065** 2007-2008 M90 (Stage 3/427R)  
**404078** 2009-2010 M90 (2009 Stage 3/427R and 2010 427R)  
**403805** 2008 P-51A and 2005-2010 Single Belt Phase 1  
**421160** 2005-2010 Single Belt Phase 2  
**404168** 1st SHEAVE 2009 P-51B, 2010 Stage 3 / 540RH and 2005-2010 DB Phase 1-3  
**404306** 2nd SHEAVE 2009 P-51B, 2010 Stage 3 /540RH and 2005-2010 DB Phase 1-3  
**421161** 2011-2012 TVS (5XR / Stage 3)

▶ **COLD AIR INTAKE**  
2010-2012 FORD MUSTANG GT



Increase up to an additional 8 hp and 8 lb-ft of torque out of your engine, while increasing your fuel efficiency. The kit features a custom high-flow ROUSH air filter with clamp, MAF tube, airbox tray with installed EPDM foam hood seal, and mounting hardware.

NOTE: This product does not fit ROUSHcharged vehicles.

▶ **420131** ROUSH Ford Mustang GT Cold Air Intake

NOTE: Not approved for use in California or states that require a California EO#.

▶ **COLD AIR INTAKE KIT**  
2005-2009 FORD MUSTANG GT



Get an additional 17 hp and 9 lb-ft of torque out of your engine, while increasing your fuel efficiency. Features the ROUSH air filter, air dam, and induction tube. Includes all necessary hardware.

▶ **402099** ROUSH Ford Mustang GT Cold Air Intake Kit

▶ **ROUSHCHARGER COLD AIR INTAKE**  
2005-2009 FORD MUSTANG GT



Unleash an additional 15 hp out of your engine, bringing the total power of your Mustang to 460 hp. Features the ROUSH reusable air filter, air dam, ROUSH PCM calibration, and induction tube. Requires a 2005-2009 Mustang GT ROUSHcharger (either supercharger part #403309 or 403310). Includes necessary hardware, quick and easy installation.

Please note that this kit will void the ROUSH Drivetrain warranty.

▶ **403913** ROUSH Ford Mustang GT ROUSHcharger Cold Air Intake

NOTE: Not approved for use in California or states that require a California EO#.

▶ **COLD AIR INTAKE KIT**  
2005-2009 FORD MUSTANG V6



Get an additional 12 hp and 9 lb-ft of torque out of your engine, while increasing your fuel efficiency. Features the ROUSH air filter, air dam, and induction tube. Includes hardware.

▶ **402098** Ford Mustang Cold Air Intake Kit

NOTE: Legal in all 50 states for 2005-2007 model years.

▶ HIGH PERFORMANCE DRIVESHAFT

2005-2010 FORD MUSTANG



Developed to handle the stress of drag racing launches. Replaces the factory two-piece driveshaft and includes a new pinion flange for reduced overall weight. The factory driveshaft weighs 38 lbs., this ROUSH Driveshaft weighs only 26 lbs.

Made from 3.5" diameter steel with a 0.083" wall and slip spline rear.

Covered by the ROUSH Competition Parts Warranty.

- ▶ 402263 High Performance Driveshaft

▶ DRIVESHAFT SAFETY LOOP

2005-2010 FORD MUSTANG



Provide additional safety to your driveshaft. Reduce potential injury and other damage should a part of the drivetrain break (such as a universal joint). This part is made with heavy duty construction to stand up to severe applications.

The ROUSH Drivetrain Safety Loop is a unique bolt-in design which uses existing hardware to attach to the vehicle. No drilling is required for installation.

Covered by the ROUSH Competition Parts Warranty.

- ▶ 401876 Driveshaft Safety Loop

▶ REAR AXLE HOUSING COVER

FORD 10 BOLT 8.8" REAR END



Adds a high level of structural integrity and styling to the rear end housing while helping prevent internal rear failures. Helps prevent rear end failures in drag racing applications. Fits standard Ford 8.8" axle housings and allows for bearing preload. Made from T6 aluminum. Features both a fill and drain port to make servicing easier and incorporates 2 load bolts with swivel "feet" for supporting the bearing caps. Increases fluid capacity by approximately 1/2 pint and decreases operating temperature by an average of 15 degrees Fahrenheit.

Features the ROUSH logo.

NOTE: This part requires the ROUSH Panhard Rod Relocation Bracket (part #401877) for installation on 2005-2010 Mustangs.

Covered by the ROUSH Competition Parts Warranty.

- ▶ 402217 Rear Axle Housing Cover

▶ SERPENTINE BELT

2004-2008 FORD F-150



Replaces belts for 2004-2008 F-150 models. Features high modulus glass fiber non-stretch cords.

- ▶ 401193 2004-2006 Ford F-150 (with Non-Intercooled ROUSHcharger #R07000001) Serpentine Belt

401464 2004-2008 Ford F-150 (with Intercooled ROUSHcharger #401633) Serpentine Belt

▶ ROUSH SUPERCHARGER KIT

2004-2008 F-150 AND LINCOLN MARK LT



Adds 145 hp and 143 lb-ft of torque at the flywheel to the trucks with the 5.4L (3V) engines, and works with both 4x2 and 4x4 models. Will bring the total power of your engine to 445 hp and 500 lb-ft of torque.

Includes a ROUSH M112 Roots-style supercharger, intake manifold, air-to-water intercooler system, high-flow fuel injectors and induction system. In addition to this hardware, the key to maximizing performance is the upgraded ROUSH PCM calibration. ROUSHcharger owners must ship their PCM unit to ROUSH Performance for the necessary calibration.

Fits all 2004-2008 trucks (2- and 4-wheel drives) equipped with the 5.4L, 3-valve modular engine, and is legal in all 50 states. Once installed, the unit is protected by the industry's leading warranty which covers the balance on Ford's 3-year/36,000-mile factory drivetrain backing, or one year on ROUSH components for trucks already beyond this level.

- ▶ 401633 ROUSHcharger with Intercooler — Ford F-150 Supercharger  
Item varies from photo.

NOTE: 2011+ 5.0L Kits Coming Summer 2011.

NOTE: 2010+ 6.2L Kits Coming Fall 2011.

▶ ALUMINUM 8 BOLT P-51 FLYWHEEL

2005-2010 FORD MUSTANG



Lightweight flywheel, providing for reduced rotational inertia and improved acceleration.

- ▶ 404000 Aluminum 8 Bolt P-51 Flywheel

▶ HEAVY DUTY CLUTCH DISC WITH SHIM KIT

2005-2010 FORD MUSTANG GT



Specially chosen for the ROUSH P-51A and P-51B Mustangs for its heavy duty capabilities. Also works with 2005-2010 Mustang GTs. Features include:

Cera-metallic lining material for maximized coefficient of friction with production Mustang level clutch pedal efforts.

Utilizes high production volume pressure plate design and shim to develop required clamping force.

Cushion spring between flywheel side and pressure plate side friction linings to improve engagement feel.

Radial spring damper on clutch disc to reduce engine torsional variation into transmission.

- ▶ 404001 Heavy Duty Clutch Disc with Shim Kit

▶ COLDER SPARK PLUG

2005-2007 FORD MUSTANG GT AND 2004-2007 FORD F-150 WITH AA LEVEL ENGINES



Used for supercharged, turbocharged, and nitrous applications. Are one heat range colder than the stock Mustang plug and are designed specifically to handle the high boost pressure and air flow into the engine. Plug gap is 0.045". Sold separately.

Designed for the Ford modular three-valve engines (4.6L and 5.4L). Same spark plug installed in the Stage 3 ROUSHcharged Mustang and F-150 packages.

- ▶ 401546 Colder Spark Plug

▶ COLD AIR INTAKE KIT

2004-2008 FORD F-150 4.6L



Unleash the hidden power and fuel economy of your engine. Features the ROUSH air filter, air dam, and induction tube. Includes necessary hardware, quick and easy installation.

NOTE: Legal in all 50 states for 2004-2007 model years excluding Heritage body.

▶ 402100 4.6L Ford F-150 Cold Air Intake Kit 2004-2006

402867 4.6L Ford F-150 Cold Air Intake Kit 2007-2008

▶ COLD AIR INTAKE KIT

2004-2008 FORD F-150 5.4L



Unleash an additional 22 hp and 32 lb-ft of torque out of your engine, while increasing your fuel efficiency. Features the ROUSH air filter, air dam, and induction tube. Includes necessary hardware, quick and easy installation.

NOTE: Legal in all 50 states for 2004-2007 model years built before 1/1/07.

▶ 402101 ROUSH 5.4L Ford F-150 Cold Air Intake Kit

▶ 2.0L COLD AIR INTAKE KIT

2008-2010 NON PZEV FOCUS



▶ 420020 ROUSH 2.0L Non PZEV Focus Cold Air Intake Kit

NOTE: Not approved for use in California or states that require a California EO#.

▶ COLD AIR INTAKE KIT

2008-2010 FORD F-250/F-350 SUPER DUTY 6.4L DIESEL



Unleash the hidden power and fuel economy of your engine. Features the ROUSH air filter, air dam, and induction tube. Includes necessary hardware, quick and easy installation.

NOTE: Not approved for use in California or states that require a California EO#.

▶ 403987 ROUSH 6.4L Diesel Ford Super Duty Cold Air Intake Kit

▶ COLD AIR INTAKE KIT

2003-2005 FORD EXCURSION 6.0L DIESEL  
2003-2007 FORD F-250/F-350 SUPER DUTY 6.0L DIESEL



Features the ROUSH air filter, air dam, and induction tube. Includes all necessary hardware, making it quick and easy to install.

NOTE: Legal in all 50 states for 2003-2007 model years.

▶ 401903 F-250/F-350 6.0L Diesel Cold Air Intake Kit

▶ COLD AIR INTAKE KIT

2009-2010 FORD F-150 5.4L & 4.6L  
2008-2010 FORD F-250/F-350 SUPER DUTY 5.4L & 6.8L



Get an additional 12 hp and 13 ft-lb of torque out of your engine, while increasing your fuel efficiency. The kit features a high performance reusable air filter and air dam.

Includes all the necessary hardware.

NOTE: Not approved for use in California or states that require a California EO#.

▶ 420118 ROUSH 5.4L Ford F-150 Cold Air Intake Kit

# BODY

**R**OUGH body components add sleek and aggressive styling to your vehicle while providing the highest level of quality. The materials used in these components are carefully selected for superior appearance, longevity, light weight, heat resistance, and impact resistance. Furthermore, ROUSH body parts are designed using OEM CAD data, ensuring that the pieces will fit on your car quickly and easily, in most cases using existing hardware locations to minimize drilling. This is in stark contrast to body parts from our competitors that often require trimming and sanding in order to get them to fit properly. These ROUSH kits also come with all required hardware, and are available pre-painted in Ford factory colors or unpainted if you prefer a custom job. ■



"Be very careful when purchasing body kits as there can be a huge difference in the quality. Some companies work from an inexpensive splash mold which tends to show imperfections and waves in the finished product. At ROUSH, we use the OEM CAD data to work from which ensures a perfect match. From there, our own Tooling Department makes the molds, and then ROUSH Manufacturing produces and paints the parts. This ensures that we control the quality each and every step, and that you will receive a body kit that fits as good as it looks."

— Jack Roush



▶ FRONT FASCIA WITH FOG LAMPS AND HARNESS

2010-2012 FORD MUSTANG GT

Includes fog lamps, plug-and-play no-splice wiring harness, and all required mounting hardware for easy installation. Available in OEM factory-matched paint colors, or unpainted.

Does not include the ROUSH 2010-2012 Mustang Front Splitter (part #420002).

- |        |                         |        |                                |
|--------|-------------------------|--------|--------------------------------|
| 420000 | Unpainted               | 420080 | Black (UA)                     |
| 420074 | Grabber Blue (CI)       | 420081 | Brilliant Silver Metallic (UI) |
| 420075 | Torch Red (D3)          | 420082 | Sterling Grey Metallic (UJ)    |
| 420077 | Performance White (HP)  | 421129 | Race Red (PQ)                  |
| 420078 | Kona Metallic Blue (L6) | 421131 | Ingot Silver (UX)              |
| 420079 | Red Candy Metallic (U6) | 421162 | Lava Red (UZ)                  |

▶ LOWER GRILLE

2010-2012 FORD MUSTANG

Fits into the lower opening of the ROUSH Front Fascia for 2010-2012 Mustangs (part #420000). Made from real billet aluminum for its appearance, resistance to corrosion and light weight and designed with CAD data to ensure precise fit.

420128 Lower Grille

▶ SEVEN-BAR BILLET UPPER GRILLE BLACK

2010-2012 FORD MUSTANG

Replaces stock grille (removing stock fog lamps) and increases air flow to the radiator. Made from real billet aluminum and painted black. Includes all necessary hardware.

- 403508 Jumper Harness  
404473 Seven-Bar Billet Upper Grille

▶ FRONT FASCIA WITHOUT FOG LAMPS AND HARNESS

2010-2012 FORD MUSTANG



Includes all required mounting hardware for easy installation. Available in OEM factory-matched paint colors, or unpainted.

Does not include the ROUSH 2010-2012 Mustang Front Splitter (part #420002).

- 420001 Unpainted  
420083 Grabber Blue (CI)  
420084 Torch Red (D3)  
420086 Performance White (HP)  
420087 Kona Metallic Blue (L6)  
420088 Red Candy Metallic (U6)  
420089 Black (UA)  
420090 Brilliant Silver Metallic (UI)  
420091 Sterling Grey Metallic (UJ)  
421163 Lava Red (UZ)

▶ FRONT SPLITTER

2010-2012 FORD MUSTANG

Fits and requires the 2010-2012 Mustang ROUSH Front Fascia. Includes required hardware and instructions for easy installation. Comes unpainted, black in color, with a stipple finish. Resistant to impact and scratching.

420002 Front Splitter



▶ REAR WING

2010-2012 FORD MUSTANG



Fits 2010-2012 Mustang GT and V6. Available in OEM factory-matched colors, or unpainted. No trimming or sanding required. Includes templates, hardware, and high-quality adhesive tape for easy installation.

NOTE: Not compatible with vehicles equipped with the 2010-2012 Ford Mustang Rear Camera option.

- 420011 Unpainted  
420103 Grabber Blue (CI)  
420104 Torch Red (D3)  
420106 Performance White (HP)  
420107 Kona Blue Metallic (L6)  
420108 Red Candy Metallic (U6)  
420109 Black (UA)  
420110 Brilliant Silver Metallic (UI)  
420111 Sterling Grey Metallic (UJ)  
421128 Race Red (PQ)  
421130 Ingot Silver (UX)  
421164 Lava Red (UZ)

▶ QUARTER WINDOW LOUVERS

2010-2012 FORD MUSTANG



No trimming or sanding required and high-quality adhesive tape for quick and easy installation is included. Available in OEM factory-matched paint colors, or unpainted.

- 420093 Unpainted  
420094 Grabber Blue (CI)  
420095 Torch Red (D3)  
420097 Performance White (HP)  
420098 Kona Blue Metallic (L6)  
420099 Red Candy Metallic (U6)  
420100 Black (UA)  
420101 Brilliant Silver Metallic (UI)  
420102 Sterling Grey Metallic (UJ)  
421132 Race Red (PQ)  
421133 Ingot Silver (UX)  
421165 Lava Red (UZ)

NOTE: Will also work on 2005-2009 Mustangs.

▶ REAR VALANCE

2010-2012 FORD MUSTANG GT



Fits 2010-2012 Ford Mustangs with ROUSH 2010-2012 Mustang Exhaust (part #420025) or stock exhaust. Comes unpainted, black in color, with a stipple finish. Resistant to impact and scratching. Includes required mounting hardware.

420009 Rear Valance

▶ SIDE SPLITTER KIT (LH AND RH)

2010-2012 FORD MUSTANG



Includes splitters for both left and right sides of vehicle. Each splitter fits underneath the stock rocker panels. No trimming needed. Includes all required parts for easy installation. Unpainted, black in color, with a stipple finish. Resistant to impact and scratches.

420092 Side Splitter



▶ 2005-2009 COMPLETE MUSTANG BODY KIT

2005-2009 FORD MUSTANG GT

Available in OEM factory-matched paint colors, or unpainted.

Unpainted body kit includes front fascia, chin spoiler, hood scoop, rocker moldings, quarter window louvers, rear fascia, and rear wing.

Painted body kit includes front fascia, chin spoiler, hood scoop, rocker moldings, rear fascia, and rear wing.

Quick and easy installation. Includes all required mounting hardware.

NOTE: Rear Fascia requires Exhaust Kit (part #401339 or 401338) for correct shape and placement of the exhaust tips.

Hood Scoop does not fit hoods with factory hood scoop installed.

Rear Valance does not fit Ford California Special vehicle package.

*Painted parts are special order.*  
*Allow 2-3 weeks.*



- |        |                       |        |                        |        |                     |          |                       |
|--------|-----------------------|--------|------------------------|--------|---------------------|----------|-----------------------|
| 401421 | Unpainted             | 402365 | Vista Blue (G9)        | 402369 | Tungsten Grey (T8)  | ▶ 403223 | Dark Candy Apple (JV) |
| 402361 | Torch Red (D3)        | 402366 | Performance White (HP) | 402370 | Satin Silver (TL)   | 403224   | Silver Metallic (YN)  |
| 402362 | Screaming Yellow (D6) | 402367 | Legend Lime (P1)       | 402371 | Grabber Orange (U3) | 403225   | Vapor Silver (ZY)     |
| 402363 | Red Fire (G2)         | 402368 | Windveil Blue (P3)     | 402372 | Black (UA)          | 404298   | Brilliant Silver (UI) |
| 402364 | Alloy (G5)            |        |                        |        |                     |          |                       |

▶ FRONT CHIN SPOILER

2005-2009 FORD MUSTANG GT



Fits and requires 2005-2009 ROUSH Mustang Front Fascia (part #401422) and is included in the 2005-2009 Mustang Complete Body Kit (part #401421). Includes required hardware and parts. Available in OEM factory-matched paint colors, or unpainted.

- |          |                        |        |                       |
|----------|------------------------|--------|-----------------------|
| 401269   | Unpainted              | 402185 | Tungsten Grey (T8)    |
| 402177   | Torch Red (D3)         | 402186 | Satin Silver (TL)     |
| ▶ 402178 | Screaming Yellow (D6)  | 402187 | Grabber Orange (U3)   |
| 402179   | Red Fire (G2)          | 402188 | Black (UA)            |
| 402180   | Alloy (G5)             | 403241 | Dark Candy Apple (JV) |
| 402181   | Vista Blue (G9)        | 403242 | Silver Metallic (YN)  |
| 402182   | Performance White (HP) | 403243 | Vapor Silver (ZY)     |
| 402183   | Legend Lime (P1)       | 404295 | Brilliant Silver (UI) |
| 402184   | Windveil Blue (P3)     |        |                       |

*Painted parts are special order.*  
*Allow 2-3 weeks.*

▶ FRONT FASCIA KIT

2005-2009 FORD MUSTANG GT



Included in Complete Mustang Body Kit (part #401421). Includes required mounting hardware. Fog lights include plug-and-play no-splice wiring harness.

Available in OEM factory-matched paint colors, or unpainted.

- |          |                        |        |                       |
|----------|------------------------|--------|-----------------------|
| 401422   | Unpainted              | 402128 | Tungsten Grey (T8)    |
| 402120   | Torch Red (D3)         | 402129 | Satin Silver (TL)     |
| ▶ 402121 | Screaming Yellow (D6)  | 402130 | Grabber Orange (U3)   |
| 402122   | Red Fire (G2)          | 402131 | Black (UA)            |
| 402123   | Alloy (G5)             | 403244 | Dark Candy Apple (JV) |
| 402124   | Vista Blue (G9)        | 403245 | Silver Metallic (YN)  |
| 402125   | Performance White (HP) | 403246 | Vapor Silver (ZY)     |
| 402126   | Legend Lime (P1)       | 404296 | Brilliant Silver (UI) |
| 402127   | Windveil Blue (P3)     |        |                       |

- 401282 ROUSH Mustang Front Fascia Closeout Panel Kit
- 401638 ROUSH Mustang Fog Lamp Bracket

*Painted parts are special order.*  
*Allow 2-3 weeks.*

▶ ROCKER MOLDING KIT

2005-2009 FORD MUSTANG



Fits both GT and V6 Mustangs, and is included in 2005-2009 Complete ROUSH Mustang Body Kit (part #401421). Available in OEM factory-matched paint colors, or unpainted.

- 401337 Unpainted
- 402144 Torch Red (D3)
- ▶ 402145 Screaming Yellow (D6)
- 402146 Red Fire (G2)
- 402147 Alloy (G5)
- 402148 Vista Blue (G9)
- 402149 Performance White (HP)
- 402150 Legend Lime (P1)
- 402151 Windveil Blue (P3)
- 402152 Tungsten Grey (T8)
- 402153 Satin Silver (TL)
- 402154 Grabber Orange (U3)
- 402155 Black (UA)
- 403238 Dark Candy Apple (JV)
- 403239 Silver Metallic (YN)
- 403240 Vapor Silver (ZY)
- 404291 Brilliant Silver (UI)

*Painted parts are special order.*  
*Allow 2-3 weeks.*

▶ NINE-BAR BILLET FRONT GRILLE BLACK

2005-2009 FORD MUSTANG



Replaces the stock grille (removing stock fog lamps) and increases air flow to the radiator by over 60%. Made from real billet aluminum and painted black. Includes all necessary hardware.

- 403184 Nine-Bar Billet Front Grille
- 403508 Jumper Harness

▶ HOOD SCOOP  
2005-2009 FORD MUSTANG



Fits both GT and V6 Mustangs, but does not fit hoods with the factory Ford hood scoop installed. Included in 2005-2009 Complete ROUSH Mustang Body Kit (part #401421). Includes a template for accurate placement on your hood, as well as all required fasteners and high-quality adhesive tape. Available in OEM factory-matched paint colors, or unpainted.

- 401345 Unpainted
  - 401769 Torch Red (D3)
  - 401770 Performance White (HP)
  - 401771 Black (UA)
  - 401795 Screaming Yellow (D6)
  - 401796 Red Fire (G2)
  - 401797 Vista Blue (G9)
  - 401798 Legend Lime (P1)
  - 401799 Windveil Blue (P3)
  - 401800 Tungsten Grey (T8)
  - 401801 Satin Silver (TL)
  - 402049 Grabber Orange (U3)
  - 402050 Alloy (G5)
  - 402056 Matte Black
  - ▶ 403226 Dark Candy Apple (JV)
  - 403227 Silver Metallic (YN)
  - 403228 Vapor Silver (ZY)
  - 404297 Brilliant Silver (UI)
- R03050032-13-AE Replacement Hood Scoop Hardware Kit  
R03050035-13-AA Replacement Hood Scoop Blackout Insert

Painted parts are special order.  
Allow 2-3 weeks.

▶ QUARTER WINDOW LOUVERS  
2005-2009 FORD MUSTANG COUPE



Fits both GT and V6 Mustang coupes, and is included in 2005-2009 Complete ROUSH Mustang Body Kit (part #401421). Includes high-quality adhesive tape for quick and easy installation. Available in OEM factory-matched paint colors, or unpainted.

- 401346 Unpainted
  - 401775 Torch Red (D3)
  - 401776 Performance White (HP)
  - 401777 Black (UA)
  - 401809 Screaming Yellow (D6)
  - 401810 Red Fire (G2)
  - 401811 Vista Blue (G9)
  - 401812 Legend Lime (P1)
  - 401813 Windveil Blue (P3)
  - 401814 Tungsten Grey (T8)
  - 401815 Satin Silver (TL)
  - 402045 Grabber Orange (U3)
  - 402046 Alloy (G5)
  - ▶ 403235 Dark Candy Apple (JV)
  - 403236 Silver Metallic (YN)
  - 403237 Vapor Silver (ZY)
  - 404292 Brilliant Silver (UI)
- R03020119-13-AA Quarter Window Louver Hardware Kit  
M19-013-0080 U-Nut  
M19-013-0081 Screw

Painted parts are special order.  
Allow 2-3 weeks.

▶ REAR VALANCE  
2005-2009 FORD MUSTANG GT



Includes center, left, and right panels, and all required mounting hardware. Professional body shop installation recommended. Available in OEM factory-matched paint colors, or unpainted. Included in the 2005-2009 Complete Mustang Body Kit (part #401421). NOTE: Requires ROUSH Exhaust (part #401339 or #401338). Does not fit Ford California Special vehicle package.

- 401271 Unpainted
- 402132 Torch Red (D3)
- ▶ 402133 Screaming Yellow (D6)
- 402134 Red Fire (G2)
- 402135 Alloy (G5)
- 402136 Vista Blue (G9)
- 402137 Performance White (HP)
- 402138 Legend Lime (P1)
- 402139 Windveil Blue (P3)
- 402140 Tungsten Grey (T8)
- 402141 Satin Silver (TL)
- 402142 Grabber Orange (U3)
- 402143 Black (UA)
- 403232 Dark Candy Apple (JV)
- 403233 Silver Metallic (YN)
- 403234 Vapor Silver (ZY)
- 404293 Brilliant Silver (UI)

Painted parts are special order.  
Allow 2-3 weeks.

▶ REAR WING  
2005-2009 FORD MUSTANG



Light-weight and rigid ABS for superior appearance. Features a notch for improved rear visibility. Includes required mounting hardware.

- 401275 Unpainted
- 401772 Torch Red (D3)
- 401773 Performance White (HP)
- 401774 Black (UA)
- ▶ 401802 Screaming Yellow (D6)
- 401803 Red Fire (G2)
- 401804 Vista Blue (G9)
- 401805 Legend Lime (P1)
- 401806 Windveil Blue (P3)
- 401807 Tungsten Grey (T8)
- 401808 Satin Silver (TL)
- 402047 Grabber Orange (U3)
- 402048 Alloy (G5)
- 402057 Matte Black
- 403229 Dark Candy Apple (JV)
- 403230 Silver Metallic (YN)
- 403231 Vapor Silver (ZY)
- 404294 Brilliant Silver (UI)

R03020119-13-AA Replacement Rear Wing Hardware Kit

Painted parts are special order.  
Allow 2-3 weeks.



▶ **BODY KIT**  
1999-2004 FORD MUSTANG

Includes front fascia kit, left and right side valance, left and right rear valance, and optional rear wing. Includes required mounting hardware. Please note kit requires Side Exhaust Kit for 1999-2004 Mustangs, available for both Mustang GT and V6 Mustang models. Kit comes unpainted.

- SM01-1K001-AA Body Kit (with Wing)
- SM01-1K002-AA Body Kit (without Wing)

▶ **FRONT LOWER VALANCE**  
1999-2004 MUSTANG



Includes all necessary mounting hardware. Part comes unpainted and does not fit Mustangs equipped with the ROUSH Front Fascia Kit.

- ▶ SM99-1100-AA Front Lower Valance

▶ **REAR VALANCE**  
1999-2004 FORD MUSTANG

This part comes unpainted, and includes all required mounting hardware and instructions for easy installation. Each side sold separately.

- SM01-1510-AA Right Rear Valance
- SM01-1520-AA Left Rear Valance

▶ **SIDE VALANCE**  
1999-2004 FORD MUSTANG

This part comes unpainted and features a hole for the ROUSH Side Exhaust kit, available for both 2001-2004 Mustang GT and V6 Mustang models. Includes required mounting hardware and instructions for easy installation. Each side sold separately.

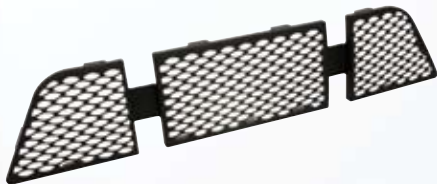
- SM01-1300-AA Right Side Valance
- SM01-1700-AA Left Side Valance

▶ **FRONT FASCIA KIT**  
1999-2004 FORD MUSTANG

Includes required mounting hardware and fog lights. Comes unpainted.

- ▶ SM01-1K100-AA Front Fascia Kit
- SM01-1100-AA Cover Only

▶ **STAGE 3 MUSTANG FASCIA GRILLE**  
1999-2004 FORD MUSTANG



Replacement bumper grill for ROUSH front Fascia Kit (part #SM01-1K100-AA).

- ▶ SM01-1110-AA Stage 3 Mustang Fascia Grille

▶ **CHIN SPOILER KIT**  
2006-2008 FORD F-150

Made from high-strength TPO (thermal plastic olefin) and designed around original manufacturer CAD data for optimum quality and fit. Includes required mounting hardware.

- 401545 Unpainted



▶ **F-150 HOOD SCOOP**  
2004-2008 FORD F-150



Includes required mounting hardware. Carbon fiber hood scoop insert sold separately.

- R03050012 Unpainted
- ▶ R03050036 Carbon Fiber Hood Scoop Insert

▶ **F-150 REAR WING**  
2004-2008 FORD F-150



All required mounting hardware is included.

- ▶ R03030019 Unpainted

# STRIPE AND GRAPHICS

**T**he Ford Mustang is a platform that people love to customize, but many of the ways to accomplish that can get quite expensive and time-consuming. ROUSH Performance has now made available a variety of vinyl stripe options for 2005 to 2011 Mustangs that can quickly and inexpensively turn a “one of many” Mustang into a “one-of-a-kind” trick pony. ■



By mixing and matching among different top, side, hood, and roof stripes, there are more than 500 different ROUSH configurations available. Customers are able to choose complete pre-designed sets or create their own by picking among the different color and style combinations.

Like those used on the ROUSH Mustang builds, these vinyl components are cut from a high-performance graphic film which offers superior resistance to ultraviolet rays and has strong adhesion qualities. All are designed and made in the United States in Roush's state-of-the-art graphic studios. ■

▶ NEW VINYL GRAPHICS

Select your own stripe combination from the vast possibilities at [ROUSHperformance.com/stripes](http://ROUSHperformance.com/stripes).

TOP STRIPES

2010-2012 MUSTANG

- Style 1 Chase
- Style 2 Atom
- Style 3 Sportsman
- Style 4 Block
- Style 5 Speed

2005-2009 MUSTANG

- Style 1 Sportsman
- Style 2 Touring
- Style 3 Block
- Style 4 Speed

SIDE STRIPES

2010-2012 MUSTANG

- Style 1 Lush
- Style 2 Charged
- Style 3 Chaos
- Style 4 Power
- Style 5 Elite

2005-2009 MUSTANG

- Style 1 Slash
- Style 2 Aeronaut
- Style 3 Aspire
- Style 4 Action
- Style 5 Elite



▶ 2010-2012  
STYLE 2 TOP



Colors	HOOD		ROOF	REAR		
	W/O Hood Scoop	With Hood Scoop	Roof	Ford Wing	No Wing	Roush Wing
Matte Black	420624	420632	420640	420648	420656	420664
White	420625	420633	420641	420649	420657	420665
Comp Gray	420626	420634	420642	420650	420658	420666
Yellow	420627	420635	420643	420651	420659	420667
Red	420628	420636	420644	420652	420660	420668
Sapphire Blue	420629	420637	420645	420653	420661	420669
Rally Blue	420630	420638	420646	420654	420662	420670
Dark Gray	420631	420639	420647	420655	420663	420671

NOTE: Rear sections require satellite radio and will not work with rear camera option.

▶ 2010-2012  
STYLE 1 TOP



Colors	HOOD		ROOF	REAR		
	W/O Hood Scoop	With Hood Scoop	Roof	Ford Wing	No Wing	Roush Wing
Matte Black	420576	420584	420592	420600	420608	420616
White	420577	420585	420593	420601	420609	420617
Comp Gray	420578	420586	420594	420602	420610	420618
Yellow	420579	420587	420595	420603	420611	420619
Red	420580	420588	420596	420604	420612	420620
Sapphire Blue	420581	420589	420597	420605	420613	420621
Rally Blue	420582	420590	420598	420606	420614	420622
Dark Gray	420583	420591	420599	420607	420615	420623

NOTE: Rear sections require satellite radio and will not work with rear camera option.

▶ 2010-2012  
STYLE 3 TOP



Colors	HOOD		ROOF	REAR		
	W/O Hood Scoop	With Hood Scoop	Roof	Ford Wing	No Wing	Roush Wing
Matte Black	420672	420680	420688	420696	420704	420712
White	420673	420681	420689	420697	420705	420713
Comp Gray	420674	420682	420690	420698	420706	420714
Yellow	420675	420683	420691	420699	420707	420715
Red	420676	420684	420692	420700	420708	420716
Sapphire Blue	420677	420685	420693	420701	420709	420717
Rally Blue	420678	420686	420694	420702	420710	420718
Dark Gray	420679	420687	420695	420703	420711	420719

NOTE: Rear sections require satellite radio and will not work with rear camera option.

▶ 2010-2012  
STYLE 4 TOP



	HOOD		ROOF	REAR		
Colors	W/O Hood Scoop	With Hood Scoop	Roof	Ford Wing	No Wing	Roush Wing
Matte Black	420720	420728	420736	420744	420752	420760
White	420721	420729	420737	420745	420753	420761
Comp Gray	420722	420730	420738	420746	420754	420762
Yellow	420723	420731	420739	420747	420755	420763
Red	420724	420732	420740	420748	420756	420764
Saphire Blue	420725	420733	420741	420749	420757	420765
Rally Blue	420726	420734	420742	420750	420758	420766
Dark Gray	420727	420735	420743	420751	420759	420767

NOTE: Rear sections require satellite radio and will not work with rear camera option.

▶ 2010-2012  
STYLE 5 TOP



	HOOD		ROOF	REAR		
Colors	W/O Hood Scoop	With Hood Scoop	Roof	Ford Wing	No Wing	Roush Wing
Matte Black	420768	420776	420784	420792	420800	420808
White	420769	420777	420785	420793	420801	420809
Comp Gray	420770	420778	420786	420794	420802	420810
Yellow	420771	420779	420787	420795	420803	420811
Red	420772	420780	420788	420796	420804	420812
Saphire Blue	420773	420781	420789	420797	420805	420813
Rally Blue	420774	420782	420790	420798	420806	420814
Dark Gray	420775	420783	420791	420799	420807	420815

NOTE: Rear sections require satellite radio and will not work with rear camera option.

▶ 2005-2009  
STYLE 1 TOP



	HOOD		ROOF	REAR		
Colors	W/O Hood Scoop	With Hood Scoop	Roof	Ford Wing	No Wing	Roush Wing
Matte Black	420272	420280	420288	420296	420304	420312
White	420273	420281	420289	420297	420305	420313
Comp Gray	420274	420282	420290	420298	420306	420314
Yellow	420275	420283	420291	420299	420307	420315
Red	420276	420284	420292	420300	420308	420316
Saphire Blue	420277	420285	420293	420301	420309	420317
Rally Blue	420278	420286	420294	420302	420310	420318
Dark Gray	420279	420287	420295	420303	420311	420319

▶ 2005-2009  
STYLE 2 TOP



	HOOD		ROOF	REAR		
Colors	W/O Hood Scoop	With Hood Scoop	Roof	Ford Wing	No Wing	Roush Wing
Matte Black	420320	420328	420336	420344	420352	420360
White	420321	420329	420337	420345	420353	420361
Comp Gray	420322	420330	420338	420346	420354	420362
Yellow	420323	420331	420339	420347	420355	420363
Red	420324	420332	420340	420348	420356	420364
Saphire Blue	420325	420333	420341	420349	420357	420365
Rally Blue	420326	420334	420342	420350	420358	420366
Dark Gray	420327	420335	420343	420351	420359	420367

▶ 2005-2009  
STYLE 3 TOP



	HOOD		ROOF	REAR		
Colors	W/O Hood Scoop	With Hood Scoop	Roof	Ford Wing	No Wing	Roush Wing
Matte Black	420368	420376	420384	420392	420400	420408
White	420369	420377	420385	420393	420401	420409
Comp Gray	420370	420378	420386	420394	420402	420410
Yellow	420371	420379	420387	420395	420403	420411
Red	420372	420380	420388	420396	420404	420412
Saphire Blue	420373	420381	420389	420397	420405	420413
Rally Blue	420374	420382	420390	420398	420406	420414
Dark Gray	420375	420383	420391	420399	420407	420415

▶ 2005-2009  
STYLE 4 TOP



	HOOD		ROOF	REAR		
Colors	W/O Hood Scoop	With Hood Scoop	Roof	Ford Wing	No Wing	Roush Wing
Matte Black	420416	420424	420432	420440	420448	420456
White	420417	420425	420433	420441	420449	420457
Comp Gray	420418	420426	420434	420442	420450	420458
Yellow	420419	420427	420435	420443	420451	420459
Red	420420	420428	420436	420444	420452	420460
Saphire Blue	420421	420429	420437	420445	420453	420461
Rally Blue	420422	420430	420438	420446	420454	420462
Dark Gray	420423	420431	420439	420447	420455	420463

▶ 2005-2009  
STYLE 1 SIDE STRIPE



Colors	Side Stripes
Matte Black	420928
White	420929
Comp Gray	420930
Yellow	420931
Red	420932
Saphire Blue	420933
Rally Blue	420934
Dark Gray	420935

▶ 2010-2012  
STYLE 1 SIDE STRIPE



Colors	Side Stripes
Matte Black	420976
White	420977
Comp Gray	420978
Yellow	420979
Red	420980
Saphire Blue	420981
Rally Blue	420982
Dark Gray	420983

▶ 2005-2009  
STYLE 2 SIDE STRIPE



Colors	Side Stripes
Matte Black	420936
White	420937
Comp Gray	420938
Yellow	420939
Red	420940
Saphire Blue	420941
Rally Blue	420942
Dark Gray	420943

▶ 2010-2012  
STYLE 2 SIDE STRIPE



Colors	Side Stripes
Matte Black	420984
White	420985
Comp Gray	420986
Yellow	420987
Red	420988
Saphire Blue	420989
Rally Blue	420990
Dark Gray	420991

▶ 2005-2009 STYLE 3 SIDE STRIPE



Colors	Side Stripes
Matte Black	420944
White	420945
Comp Gray	420946
Yellow	420947
Red	420948
Sapphire Blue	420949
Rally Blue	420950
Dark Gray	420951

▶ 2010-2012 STYLE 3 SIDE STRIPE



Colors	Side Stripes
Matte Black	420992
White	420993
Comp Gray	420994
Yellow	420995
Red	420996
Sapphire Blue	420997
Rally Blue	420998
Dark Gray	420999

▶ 2005-2009 STYLE 5 SIDE STRIPE



Colors	Side Stripes
Matte Black	420960
White	420961
Comp Gray	420962
Yellow	420963
Red	420964
Sapphire Blue	420965
Rally Blue	420966
Dark Gray	420967

▶ 2010-2012 STYLE 5 SIDE STRIPE



Colors	Side Stripes
Matte Black	421008
White	421009
Comp Gray	421010
Yellow	421011
Red	421012
Sapphire Blue	421013
Rally Blue	421014
Dark Gray	421015

▶ 2005-2009 STYLE 4 SIDE STRIPE



Colors	Side Stripes
Matte Black	420952
White	420953
Comp Gray	420954
Yellow	420955
Red	420956
Sapphire Blue	420957
Rally Blue	420958
Dark Gray	420959

▶ 2010-2012 STYLE 4 SIDE STRIPE



Colors	Side Stripes
Matte Black	421000
White	421001
Comp Gray	421002
Yellow	421003
Red	421004
Sapphire Blue	421005
Rally Blue	421006
Dark Gray	421007

▶ 2005-2009 STYLE 1 WRAP



Colors	Hood/Side Wrap W/O Scoop	Hood/Side Wrap W/Ford Scoop	Hood/Side Wrap LH & RH Sides
Matte Black	420544	420552	420968
White	420545	420553	420969
Comp Gray	420546	420554	420970
Yellow	420547	420555	420971
Red	420548	420556	420972
Sapphire Blue	420549	420557	420973
Rally Blue	420550	420558	420974
Dark Gray	420551	420559	420975

▶ 2010-2012 STYLE 1 WRAP



Colors	Hood/Side Wrap W/O Scoop	Hood/Side Wrap W/Ford Scoop	Hood/Side Wrap LH & RH Sides
Matte Black	420896	420904	421016
White	420897	420905	421017
Comp Gray	420898	420906	421018
Yellow	420899	420907	421019
Red	420900	420908	421020
Sapphire Blue	420901	420909	421021
Rally Blue	420902	420910	421022
Dark Gray	420903	420911	421023

▶ COUPE STRIPE KIT  
2005-2009 FORD MUSTANG



Fits Mustang GT coupes with the Complete ROUSH Mustang Body Kit (part #401421) only. Includes two stripes that are 6.5" wide, spaced 1" apart. ROUSH vinyl graphics are made from high performance cast graphic film.

- 401358 Gloss Black
- 401359 Silver
- 401360 Tan
- 401361 White
- 401362 Blue
- 401962 Matte Black
- 402840 Light Blue Metallic
- 402841 Red
- ▶ 402852 Yellow
- 403689 Competition Grey

▶ 380R STRIPE KIT  
2000-2004 FORD MUSTANG



Fits Mustang V8 convertibles with the 2001 Cobra hood and the ROUSH front fascia. Consists of two 6.5" wide stripes with 1" spacing.

- SM03-6300-G Gold
- SM03-6300-W White
- ▶ SM04-6300-BK Black
- SM04-6300-BL Blue
- SM04-6300-P Light Briar Brown

▶ CONVERTIBLE STRIPE KIT  
2005-2009 FORD MUSTANG GT



Fits Mustang GT convertibles with Complete ROUSH Body Kit (part #401421) only. Includes two stripes that are 6.5" wide spaced 1" apart.

- |                    |                            |
|--------------------|----------------------------|
| 401499 Gloss Black | 402823 Tan                 |
| 401500 Silver      | 402842 Light Blue Metallic |
| 401502 White       | 402843 Red                 |
| 401503 Blue        | 402853 Yellow              |
| 401961 Matte Black | 403690 Competition Grey    |

▶ ROCKER STRIPE KIT  
2005-2009 FORD MUSTANG



Fits Mustang GT and V6 coupes and convertibles with factory body components. Will also fit vehicles equipped with the ROUSH Mustang Rocker Molding Kit (part #401337), with some modifications.

- |                    |                            |
|--------------------|----------------------------|
| 401838 Blue        | 402939 Red                 |
| 401839 Matte Black | 402940 Light Blue Metallic |
| 401840 Silver      | 402941 Yellow              |
| 401841 White       | 403757 Competition Grey    |
| 401842 Tan         |                            |

▶ "HYBRID" COUPE STRIPE KIT  
2005-2009 FORD MUSTANG GT



Fits Mustang GT coupes with factory front and rear fascia, and ROUSH rear wing and hood scoop installed. Includes two stripes 6.5" wide spaced 1" apart.

- |                    |                            |
|--------------------|----------------------------|
| 401828 Blue        | 402934 Red                 |
| 401829 Matte Black | 402935 Light Blue Metallic |
| 401830 Silver      | 402936 Yellow              |
| 401831 White       | 403755 Competition Grey    |
| 401832 Tan         |                            |

▶ "HYBRID" CONVERTIBLE STRIPE KIT  
2005-2009 FORD MUSTANG GT



Fits Mustang GT convertibles with factory front and rear fascia, and ROUSH rear wing and hood scoop installed. Includes two stripes 6.5" wide spaced 1" apart.

- |                    |                            |
|--------------------|----------------------------|
| 401833 Blue        | 402942 Red                 |
| 401834 Matte Black | 402943 Light Blue Metallic |
| 401835 Silver      | 402944 Yellow              |
| 401836 White       | 403756 Competition Grey    |
| 401837 Tan         |                            |

▶ ROUSHCHARGED HOOD SCOOP DECAL  
2005-2009 FORD MUSTANG AND  
2004-2008 FORD F-150



Fits on the side of ROUSH Hood Scoop Kits (part #401345 and #R03050012).

Made of high performance cast graphic film, which has superior resistance to sunlight and adhesive longevity.

- |                    |                         |
|--------------------|-------------------------|
| ▶ 401853 Silver    | 402006 Yellow           |
| 401854 White       | 402034 Tan              |
| 401855 Gloss Black | 402835 Red              |
| 401856 Blue        | 403682 Competition Grey |
| 401972 Matte Black | 404411 Orange           |

▶ STOCK COUPE STRIPE KIT  
2005-2009 FORD MUSTANG GT



Fits Mustang GT coupes with factory body components. Includes two stripes 6.5" wide spaced 1" apart. Made from high performance cast graphic film.

- |                    |                            |
|--------------------|----------------------------|
| 401843 Blue        | 402922 Red                 |
| 401844 Matte Black | 402937 Light Blue Metallic |
| 401845 Silver      | 402938 Yellow              |
| 401846 White       | 403758 Competition Grey    |
| 401847 Tan         |                            |

▶ STOCK CONVERTIBLE STRIPE KIT  
2005-2009 FORD MUSTANG GT



Fits Mustang GT convertibles with factory body components. Includes two stripes 6.5" wide spaced 1" apart.

- |                    |                            |
|--------------------|----------------------------|
| 401848 Blue        | 402945 Red                 |
| 401849 Matte Black | 402946 Light Blue Metallic |
| 401850 Silver      | 402947 Yellow              |
| 401851 White       | 403759 Competition Grey    |
| 401852 Tan         |                            |

▶ ROUSHCHARGED HOOD DECAL  
2010-2012 FORD MUSTANG



Fits on stock 2010-2012 Mustang hoods, made of high-quality vinyl.

- |                            |               |
|----------------------------|---------------|
| 420121 Blue                | 420125 Red    |
| 420122 Competition Grey    | 420126 White  |
| 420123 Light Blue Metallic | 420127 Yellow |
| ▶ 420124 Matte Black       |               |

## ► WINDSHIELD BANNER

1994-2012 FORD MUSTANG



Place the ROUSH logo at the top of your windshield. Made of durable high performance graphic film.

- |                    |                            |
|--------------------|----------------------------|
| 401363 Silver      | 402859 Yellow              |
| ▶ 401374 White     | 402860 Blue                |
| 402790 Matte Black | 402035 Tan                 |
| 402858 Red         | 402857 Light Blue Metallic |

► **ROUSH ETCHED GLASS WINDSHIELD BANNER**

2008-2009 FORD SUPER DUTY



Simulated etched glass ROUSH logo banner.

- ▶ **403991** ROUSH Etched Glass Windshield Banner

## ► WINDSHIELD BANNER

1997-2008 FORD F-150



Place the ROUSH logo at the top of your windshield. Made of durable high performance graphic film.

- R09010002** Silver
- 402005** Yellow
- 402042** Green
- ▶ **402880** Matte Black
- 402905** White
- 403560** Blue
- 403561** Light Blue Metallic
- 403562** Red
- 403563** Tan

► **SILVER JACK ROUSH EDITION 1/4 WINDOW DECAL**

Made of high performance cast graphic film, this decal features the autograph of Jack Roush.

- **SM96-6201-A** Silver Jack Roush Edition 1/4 Window Decal

## ▶ ROUSH REAR WINDSHIELD DECAL



- |                      |                            |
|----------------------|----------------------------|
| ▶ 0000-S003-S Silver | 404337 Yellow              |
| 401375 White         | 404338 Light Blue Metallic |
| 404335 Blue          | 404339 Red                 |
| 404336 Matte Black   |                            |



► **TOP LEVEL STRIPE KIT**

2004-2008 FORD F-150



Two stripes go down the middle of the vehicle. Stripes measure approximately 7" wide with 1.5" spacing. Requires F-150 Hood Scoop (part #R03050012). Does not work with Flareside.

- 401554 White (Super Cab)
- 401556 White (Super Crew Cab)
- 401660 Blue (Super Crew Cab)
- ▶ 401750 Blue (Super Cab)
- 401963 Matte Black (Super Cab)
- 401964 Matte Black (Super Crew Cab)
- 403729 Competition Grey (Super Cab)
- 403731 Competition Grey (Super Crew Cab)
- 403742 Light Blue Metallic (Super Cab)
- 403743 Red (Super Cab)
- 403744 Tan (Super Cab)
- 403745 Light Blue Metallic (Super Crew Cab)
- 403746 Red (Super Crew Cab)
- 403747 Tan (Super Crew Cab)
- R09010014 Black (Super Cab)
- R09010016 Black (Super Crew Cab)



## ► ROCKER LEVEL STRIPE KIT

2004-2008 FORD F-150



Super Cab/Super Crew Cab F-150 rocker level stripe kit consists of two stripes that run along the sides of the vehicle. Made from high performance cast graphic film. 5.5 ft bed only for ALL SUPER CREW ROCKER STRIPES.

- |               |                                      |                  |   |
|---------------|--------------------------------------|------------------|---|
| <b>401555</b> | White (Super Cab)                    | <b>403749</b>    | Red (Super Cab)                         |
| <b>401557</b> | White (Super Crew Cab)               | <b>403750</b>    | Tan (Super Cab)                         |
| <b>401659</b> | Blue (Super Crew Cab)                | <b>403751</b>    | Light Blue Metallic<br>(Super Crew Cab) |
| <b>401712</b> | Blue (Super Cab)                     | <b>403752</b>    | Red (Super Crew Cab)                    |
| <b>401965</b> | Matte Black (Super Cab)              | <b>403753</b>    | Tan (Super Crew Cab)                    |
| <b>401966</b> | Matte Black (Super<br>Crew Cab)      | <b>R09010018</b> | Black (Super Cab)                       |
| <b>403728</b> | Competition Grey<br>(Super Cab)      | <b>R09010020</b> | Black (Super Crew<br>Cab)               |
| <b>403730</b> | Competition Grey<br>(Super Crew Cab) |                  |   |
| <b>403748</b> | Light Blue Metallic<br>(Super Cab)   |                  |   |

# SUSPENSION

**R**OUGH suspension kits are thoroughly engineered and tested to the highest performance standards. Each upgrade package has been painstakingly designed to enhance the unique and subtle balance characteristics of the intended vehicle. Developed by some of the top chassis engineers in the industry, our suspension kits have been developed via hundreds of hours of testing and thousands of miles on both the street and racetracks across the country. Tests include slalom, lane change, skid pad, and were performed on a wide variety of road surfaces to provide the best combination of ride comfort and road handling. Data used in developing these kits is captured and evaluated using a DIVAS Data Acquisition System, the same equipment used by Ford vehicle engineers. ■

*"ROUGH has always been known for being the best in powertrain components, but we also have some of the most knowledgeable chassis engineers in the auto industry on staff. I continually challenge them to design suspension pieces that offer tremendous performance enhancements yet don't make sacrifices when it comes to ride comfort."*

— Jack Roush



▶ ROUSH STAGE 3 SUSPENSION KIT

2005-2010 FORD MUSTANG



Provides the ultimate in high performance handling. Includes springs, dampeners, jounce bumpers, and anti-roll bars. Installed, it lowers the car approximately 1" for a more aggressive stance. All required hardware included.

For optimum performance, it is suggested that you use ROUSH RR03 18" x 10" Forged Chrome Wheel (part #402422 or equivalent).

- 401441 Front Coil Spring (individual)
- 401442 Rear Coil Spring (individual)
- 401620 Front Strut (individual)
- 401622 Rear Shock (individual)
- 401623 Front Stabilizer Bar
- 401626 Rear Stabilizer Bar
- ▶ 401761 ROUSH Stage 3 Ford Mustang Suspension Kit

▶ ROUSH STAGE 2 SUSPENSION KIT

2005-2010 FORD MUSTANG



Integrated system for your vehicle providing superior handling, without sacrificing ride quality. Handles over 1.0g lateral on skid pad. Lowers vehicle by 1". Includes springs, dampeners, jounce bumpers, and anti-roll bars.

Recommended for use with ROUSH wheels.

- ▶ 401296 Complete ROUSH Ford Mustang Suspension Kit
- 401294 Front Coil Spring (pair)
- 401295 Rear Coil Spring (pair)
- 401297 Front Struts (pair)
- 401298 Rear Shocks (pair)
- 401299 Front Stabilizer Bar
- 401300 Rear Stabilizer Bar
- 401441 Front Coil Spring (individual)
- 401442 Rear Coil Spring (individual)
- 401455 Front Strut (individual)
- 401456 Rear Shock (individual)

▶ ROUSH ADJUSTABLE COIL OVER SUSPENSION KIT

2005-2010 FORD MUSTANG



Adjustable, camber plate angle (up to 3 degrees of negative camber) and ride height. Allows you to change your suspension settings when going between track and street use.

Includes front and rear adjustable dampers, matching elastomer jounce bumpers, front and rear springs, front and rear jounce bumpers, and camber plates.

- ▶ 403151 ROUSH Ford Mustang Trak Pak Suspension System
- Some recommended but optional upgrades for use with this system are the following:
- 401299 Front Stabilizer Bar
- 401300 Rear Stabilizer Bar

▶ EXTREME LOWERING SPRING KIT

2005-2012 FORD MUSTANG



Includes four springs, two for both front and rear. Lowers your vehicle 1.25" in front and 1.5" in rear. Includes a set of rear jounce bumpers. Recommended for use with stock Mustang shocks, struts, and ROUSH wheels. Not recommended for use on ROUSHcharged vehicles.

- ▶ 402331 Ford Mustang Extreme Lowering Spring Kit

▶ ROUSH SUSPENSION KIT

2011-2012 MUSTANG



Integrated system for your vehicle providing superior handling, without sacrificing ride quality. Handles over 1.0g lateral on skid pad. Lowers vehicle by 3/4". Includes springs, dampeners, jounce bumpers, and anti-roll bars.

- ▶ 421156 Complete ROUSH Ford Mustang Suspension Kit

▶ **ROUSH LOWERING SPRING KIT**

2010-2012 FORD MUSTANG



Includes four springs, two each for front and rear. Intended to be used for lowering 2010-2012 Mustangs that already have the ROUSH suspension system (whether production ROUSH Mustangs with ROUSH suspension or cars that have otherwise been upfitted with this system). Lowers vehicle approximately 1/2".

- ▶ **404472** 2010-2011 ROUSH Mustang Lowering Springs

▶ **FRONT SPRING**

1994-2004 FORD MUSTANG



Provides more rigidity and stability for your car's suspension, improving its cornering ability. Works as part of the ROUSH suspension system for 1994-2004 Mustangs (used in part #SM01-3K000-V8 kit). Sold separately; two are required.

- ▶ **SM01-3700-V8** Ford Mustang Front Spring

▶ **BILLET LOWER TRAILING ARMS**

2005-2012 FORD MUSTANG



Adds styling and performance to the rear suspension. Reduces rear deflection. Features rubber bushings that don't crack under loads like polyurethane and provide for much better NVH and ride quality. Sold as a pair, including one for both left and right sides

This part is recommended to be used with the Mustang Wheel Hop Reduction Kit (part #401788).

- ▶ **401429** Ford Mustang Billet Lower Trailing Arms

▶ **WHEEL HOP REDUCTION KIT**

2005-2012 FORD MUSTANG



Eliminates wheel hop and improves delivery of power to the rear wheels. Bracket and arm made from high-strength steel.

- ▶ **401788** Wheel Hop Reduction Kit (2005-2010 Mustang)  
▶ **421120** Wheel Hop Reduction Kit – Lowered Vehicles (2011-2012 Mustang)

▶ **4X2 SUSPENSION KIT**

2004-2008 FORD F-150



Transforms your truck, giving it high performance car-like handling and lower, more aggressive stance (lowers it 2" in front and 3" in rear). Includes front and rear shocks, stabilizer bar, front coil springs, and rear leaf springs. Recommended for use with ROUSH F-150 wheels.

- ▶ **R06000005** Ford F-150 4x2 Suspension Kit  
Includes the following parts:  
**R06020010** 4x2 Front Shock  
**R06020017** 4x2 Stabilizer Bar  
**R06020019** 4x2 Front Coil Springs  
**R06030009** Rear Leaf Spring  
**R06030010** 4x2 Rear Shock

▶ **4X4 SUSPENSION KIT**

2004-2008 FORD F-150

Transforms your truck, giving it high performance car-like handling and lower, more aggressive stance (2" in front and 3" in rear). Includes front and rear shocks, stabilizer bar, front coil springs, and rear leaf springs. Recommended for use with ROUSH F-150 wheels.

- ▶ **R06000007** Ford F-150 4x4 Suspension Kit  
Includes the following parts:  
**R06020017** 4x4 Stabilizer Bar  
**R06020021** 4x4 Front Coil Springs  
**R06020024** 4x4 Front Shock  
**R06030009** Rear Leaf Spring  
**R06030017** 4x4 Rear Shock

▶ **4X2 AND 4X4 STABILIZER BAR KIT**

2004-2008 FORD F-150 4X2 AND 4X4



This 35mm solid front stabilizer bar provides rigidity to your truck's suspension, improving its cornering ability. Works as part of ROUSH 4x2 (part #R06000005) and 4x4 (part #R06000007) Full Suspension Kits.

- ▶ **R06020017** Ford F-150 4x2 and 4x4 Stabilizer Bar Kit

▶ **REAR SPRING**

1994-2004 FORD MUSTANG



Provides more rigidity and stability for your car's suspension, improving its cornering ability. Works as part of the ROUSH suspension system for 1994-2004 Mustangs (used in part #SM01-3K000-V8 kit). Sold separately; two are required.

- ▶ **SM01-3750-V8** Ford Mustang Rear Spring

▶ **REAR SHOCK**

1994-2004 FORD MUSTANG



Provides more rigidity and stability for your car's suspension, improving its cornering ability. Works as part of the ROUSH suspension system for 1994-2004 Mustangs (used in part #SM01-3K000-V8 kit). Sold separately; two are required.

- ▶ **SM01-3650-V8** Ford Mustang Rear Shock

▶ **STRUT TOWER BRACE**

2005-2009 FORD MUSTANG



Attaches to the strut towers to provide better front stability for improved cornering ability. Powder-coated for durability and longevity. Works with both ROUSHcharged and non-ROUSHcharged vehicles. Does NOT work with ROUSH Plenum Covers.

- ▶ **402194** Ford Mustang Strut Tower Brace



# EXHAUST

**R**OUGH exhaust kits are designed not only to enhance the sound of your vehicle, but also to augment the horsepower and efficiency of your engine. This is in part achieved with mandrel tube bending, which minimizes any decreased airflow through pipe bends. This method allows for a significant increase in flow over stock/crushed-bent pipes. Due to this increased efficiency, both latent power and fuel efficiency are realized. In addition, ROUSH exhausts are made from high-quality steel for overall quality and longevity. If you want your Mustang to growl like an American Muscle Car should, then a ROUSH exhaust system should be on your "must add" list of parts. ■

"I know that when I get behind the wheel of an American-made V-8 engine, I want to hear that sound of power, and that's what we've designed the ROUSH exhaust to do. You'll get the rumble you want, but also some increased efficiency which, in some cases, can add to the performance and horsepower."

— Jack Roush

▶ **ROUSH EXTREME PERFORMANCE EXHAUST KIT**

2005-2010 FORD MUSTANG GT/GT500

Loudest ROUSH exhaust for 2005-2010 Mustangs. Made of high-quality 2.5" diameter stainless steel tubing and has 4" diameter tips constructed from polished 304 stainless steel embossed with the ROUSH logo. Fits 2005-2010 Mustang GTs and Shelby GT500s with the stock rear fascia.

**403936** 2005-2009 GT/GT500 Extreme Performance Exhaust Kit

▶ **420025** 2010 Extreme Performance Exhaust (Off-Road)



▶ **ROUSH EXHAUST KIT**

2005-2009 FORD MUSTANG GT

Includes exhaust tips, mufflers, and required hardware for installation. Requires the ROUSH Rear Fascia for 2005-2009 Mustangs (part #401271). This bolt-on axle-back exhaust system attaches to the factory midpipes and requires no cutting.

▶ **401338** 2005-2009 Ford Mustang Exhaust Kit (Street)

**401339** 2005-2009 Ford Mustang GT Exhaust System (Off-Road)

**401340** 2005-2009 Ford Mustang Off-Road Exhaust Mufflers without Tips



▶ **ROUSH EXHAUST KIT**

2005-2009 FORD MUSTANG GT/GT500

Works with the stock rear fascia. This axle-back exhaust system bolts on and requires no cutting and attaches to the factory midpipes.

▶ **401423** 2005-2009 Ford Mustang GT/GT500



▶ **ROUSH SIDE EXHAUST KIT**

2001-2004 FORD MUSTANG GT



The parts of this package include cast exhaust tips, intermediate exhaust tubes, mufflers with outlets, outlet pipes, rubber exhaust insulator, and installation hardware. This kit requires SM01 Side Skirts (part #SM01-1300-AA right and #SM01-1700-AA left) for the exhaust exits.

**SM01-4K000-V6** 2001-2004 Ford Mustang V6 Exhaust Kit with Cast Tips

**SM01-4K000-V8** 2001-2004 Ford Mustang GT Exhaust Kit

▶ **SM02-4K010-V8** 2001-2004 Mustang GT Enhanced Sound Exhaust Kit with Cast Tips

▶ **ROUSH EXHAUST KIT**

2011-2012 FORD MUSTANG GT/GT500

Uses 409 stainless steel in the construction of the pipes and muffler. ROUSH exclusive open-chambered design that will not deteriorate over time unlike conventional fiberglass roving material. Exhaust tips are made from 304 stainless steel and finished with a unique chrome flashing process. Uses all factory hanger locations and pierce points. No modifications to the vehicle are necessary.

▶ **421126** Exhaust Kit with Square Tips (Requires 420009 ROUSH rear valance)

**421127** Exhaust Kit with Round Tips (Fits Ford factory rear valance)

**421155** Exhaust Kit with Square Tips and Rear Valance

**421157** Replacement LH Square Exhaust Tip

**421158** Replacement RH Square Exhaust Tip

**421159** Replacement Round Exhaust Tip



▶ **ROUSH EXHAUST KIT**

2011-2012 FORD MUSTANG V6

Uses 409 stainless steel in the construction of the pipes and muffler. ROUSH exclusive open-chambered design that will not deteriorate over time unlike conventional fiberglass roving material. Exhaust tips are made from 304 stainless steel and finished with a unique chrome flashing process. Uses all factory hanger locations and pierce points. No modifications to the vehicle are necessary.

**421145** Exhaust Kit with Square Tips (420009 ROUSH Rear Valance)

▶ **421146** Exhaust Kit with Round Tips (Fits Factory Ford or ROUSH Rear Valance)

**421154** Exhaust Kit with Square Tips and ROUSH Rear Valance Combo



▶ **ROUSH EXHAUST TIPS**  
2005-2009 FORD MUSTANG



Polished stainless steel finish. Replacement part for ROUSH exhaust systems that works with the ROUSH Rear Fascia for 2005-2009 Mustangs (part #401271).

- ▶ **403547** 2005-2009 Ford Mustang Exhaust Tip (Left)
- 403548** 2005-2009 Ford Mustang Exhaust Tip (Right)

▶ **ROUSH RECTANGULAR EXHAUST TIPS**  
1999-2000 FORD MUSTANG



This is part of the SM99 ROUSH exhaust kit and will only work with this kit. Each tip sold separately.

- ▶ **SM99-4700-A** 1999-2000 Ford Mustang Rectangular Exhaust Tip

▶ **ROUSH CAST ALUMINUM EXHAUST TIPS**  
1999-2004 FORD MUSTANG



Works with the 2001-2004 Mustang Side Valance (part #SM01-1700-AA). Included in both the ROUSH V6 Side Exhaust Kit (part #SM01-4K000-V6) and the ROUSH V8 Side Exhaust Kit (part #SM01-4K000-V8) for 2001-2004 Mustangs. Cast aluminum with a polished outer edge on the tip.

- ▶ **SM01-4700-LH** 1999-2004 Ford Mustang Cast Aluminum Exhaust Tip (Left)
- SM01-4700-RH** 1999-2004 Ford Mustang Cast Aluminum Exhaust Tip (Right)

▶ **ROUSH DUAL EXIT EXHAUST KIT**  
2004-2008 FORD F-150



Works with F-150 4x2 and 4x4 vehicles with 4.6L and 5.4L engines.

- 401218** Replacement Street Exhaust Tip
- 401219** Replacement Off-Road Exhaust Tip
- 401591** 2005-2008 Ford F-150 4x2/4x4 Dual Rear Exit Exhaust Kit (Street)

- 401593** 2005-2008 Ford F-150 Dual Rear Exit Exhaust Kit (Off-Road)
- ▶ **R12000006** 2004 Ford F-150 Dual Exhaust Kit (Street)
- R12000007** 2004 Ford F-150 Dual Exhaust Kit (Off-Road)

▶ **ROUSH OVAL EXHAUST TIP**  
1994-1998 FORD MUSTANG



Dresses up the side exhaust exits of your Mustang. Requires SM94 side valances and fits the SM94 exhaust kits. Each tip sold separately.

- ▶ **SM94-4700-A** 1994-1998 Ford Mustang Oval Exhaust Tip

▶ **ROUSH EXHAUST INSULATOR**  
1998-2004 FORD MUSTANG



Connect the tailpipe to the body of the vehicle to ensure correct exhaust positioning and provide vibration-free operation.

- ▶ **SM99-4502-A** 1998-2004 Ford Mustang Exhaust Insulator

▶ **ROUSH EXHAUST INSULATOR**  
1994-2004 FORD MUSTANG AND  
2004-2008 FORD F-150



Isolators that connect the body exhaust mounts to the exhaust mounts for 1994-2004 Mustang exhaust kits. Included in the kits of part #SM94-4K000-V6, SM99-4K000-V6, SM01-4K000-V6, SM94-4K000-V8, SM99-4K000-V8, SM01-4K000-V8, and SM02-4K010-V8.

- ▶ **F8RZ-5A262-AA** 1994-2004 Ford Mustang, 2004-2008 Ford F-150 Exhaust Insulator

▶ **ROUSH DUAL SIDE EXIT EXHAUST KIT**  
2004-2008 FORD F-150



Works with 2004-2008 F-150 4x2 and 4x4 with 4.6L and 5.4L engine SuperCabs with a 6.5' box and SuperCrew Cabs with a 5.5' box. Rear exhaust exit version available under part #401591 and under part #R12000006 for 2004 F-150s.

- ▶ **400793** 2004-2008 F-150 Dual Side Exit Exhaust Kit (Street)
- R12000005** 2004-2008 Ford F-150 Dual Side Exit Exhaust Kit (Off-Road)

# INTERIOR

**R**OUGH interior kits add both performance functionality and styling elements to your vehicle. You can spice up your vehicle's interior with our leather seating, which features hand-selected high-quality leather, as well as improved side-to-side driver stability to keep you planted in your seat while going around turns at speed. Give your vehicle a completely new look on the inside with our interior trim kits, or achieve race-inspired shifting feel and functionality with our line of shifter knobs, arms, boots, short-shifter assemblies, and shifter bezels. Additional upgrade kits for your vehicle's interior include console buttons, door sill plates, pedals, floor mats, gauges, vent gauge pods, seat belt sleeves, and more. ■

"There are a lot of ways to customize your Mustang and turn it into a one-of-a-kind car, both quickly and inexpensively. Leather, shifters, and billet accessories are all ways that can improve the interior look, feel, and functionality of your vehicle."

— Jack Roush

▶
LEATHER SEATS

Features larger side bolsters for better lateral support in turns and seat cushioning that is denser foam than that used in the stock seats and embroidered Jack Roush signature. Made of high quality leather. NOTE: 2005-2007 kits will not work with optional side air bags (inside seats).



Please note this kit does not replace the seat core itself. It only replaces the existing covers of the stock seat.



2005-2007 FORD MUSTANG (COUPE/FACTORY LEATHER)\*

- 401349 Dark Charcoal & Gray
- 401350 Dark Charcoal & Blue
- 401351 Tan & Blue
- 401352 Dark Charcoal & Red
- 401353 Tan & Red
- 401354 Dark Charcoal & Yellow
- 401589 Two Tone Tan
- 401988 Dark Charcoal with Orange Stitching

2005-2007 FORD MUSTANG (CONVERTIBLE/FACTORY LEATHER)\*

- 401492 Dark Charcoal & Gray
- 401493 Dark Charcoal & Blue
- 401494 Dark Charcoal & Red
- 401495 Dark Charcoal & Yellow
- 401496 Two Tone Tan
- 401497 Tan & Blue
- 401498 Tan & Red
- 401988 Dark Charcoal with Orange Stitching

2005-2006 FORD MUSTANG (COUPE/FACTORY CLOTH)\*

- 401602 Dark Charcoal & Gray
- 401603 Two Tone Tan
- 401604 Dark Charcoal & Red
- 401605 Dark Charcoal & Blue
- 401606 Tan & Blue
- 401607 Tan & Red
- 401608 Dark Charcoal & Yellow

2005-2006 FORD MUSTANG (CONVERTIBLE/FACTORY CLOTH)\*

- 401609 Dark Charcoal & Gray
- 401610 Dark Charcoal & Blue
- 401611 Dark Charcoal & Red
- 401612 Dark Charcoal & Yellow
- 401613 Two Tone Tan
- 401614 Tan & Blue
- 401615 Tan & Red

2007 FORD MUSTANG (COUPE/FACTORY CLOTH)\*

- 402682 Two Tone Dark Charcoal
- 402687 Two Tone Tan
- 402688 Dark Charcoal & Blue
- 402689 Tan & Blue
- 402690 Dark Charcoal & Red
- 402691 Tan & Red
- 402692 Dark Charcoal & Yellow
- 402817 Dark Charcoal with Orange Stitching

2007 FORD MUSTANG (CONVERTIBLE/FACTORY CLOTH)\*

- 402693 Two Tone Dark Charcoal
- 402694 Two Tone Tan
- 402699 Dark Charcoal & Blue
- 402700 Tan & Blue
- 402701 Dark Charcoal & Red
- 402702 Tan & Red
- 402703 Dark Charcoal & Yellow
- 402818 Dark Charcoal with Orange Stitching

2008-2009 FORD MUSTANG (COUPE/FACTORY LEATHER)

- 402978 Two Tone Dark Charcoal
- 402979 Two Tone Tan
- 402980 Dark Charcoal & Blue
- 402981 Tan & Blue
- 402982 Dark Charcoal & Red
- 402983 Tan & Red
- 402984 Dark Charcoal & Yellow
- 403220 Dark Charcoal with Graphite Stitching
- 403221 Dark Charcoal with Orange Stitching

2008-2009 FORD MUSTANG (CONVERTIBLE/FACTORY LEATHER)

- 402985 Two Tone Dark Charcoal
- 402986 Two Tone Tan
- 402987 Dark Charcoal & Blue
- 402988 Tan & Blue
- 402989 Dark Charcoal & Red
- 402990 Tan & Red
- 402991 Dark Charcoal & Yellow
- 403222 Dark Charcoal with Graphite Stitching
- 403253 Dark Charcoal with Orange Stitching

2008-2009 FORD MUSTANG (COUPE/FACTORY CLOTH)

- 403006 Two Tone Dark Charcoal
- 403007 Two Tone Tan
- 403008 Dark Charcoal & Blue
- 403009 Tan & Blue
- 403010 Dark Charcoal & Red
- 403011 Tan & Red
- 403012 Dark Charcoal & Yellow
- 403450 Dark Charcoal with Graphite Stitching
- 403451 Dark Charcoal with Orange Stitching

2008-2009 FORD MUSTANG (CONVERTIBLE/FACTORY CLOTH)

- 403013 Two Tone Dark Charcoal
- 403014 Two Tone Tan
- 403015 Dark Charcoal & Blue
- 403016 Tan & Blue
- 403017 Dark Charcoal & Red
- 403018 Tan & Red
- 403019 Dark Charcoal & Yellow
- 403452 Dark Charcoal with Graphite Stitching
- 403453 Dark Charcoal with Orange Stitching

▶
FLOOR MATS

2005-2011 FORD MUSTANG



Includes four mats: left and right of both front and rear. The driver-side mat features a 10mm diameter brass ring to accommodate the driver-side mat hook.

- 401355 05-09 Ford Mustang Floor Mats (Black & Gray)
- 401356 05-09 Ford Mustang Floor Mats (Tan)
- ▶ 401357 05-09 Ford Mustang Floor Mats (Black & Red)
- 402033 05-09 Ford Mustang Floor Mats (Dark Charcoal)
- 421118 2011 Ford Mustang Floor Mats (Black)
- 421134 2010 Ford Mustang Floor Mats (Black & Gray)

▶
FLOOR MATS

1994-2004 FORD MUSTANG



Features polypropylene fibers for their strength. ROUSH Floor Mats include four mats: left and right of both front and rear.

- ▶ SM94-5100-DG Dark Grey Floor Mats
- SM94-5100-T Tan Floor Mats

► ILLUMINATED DOOR SILL PLATES

2010-2012 FORD MUSTANG



Consists of two bezel inserts that fit into the door sill plate areas. The ROUSH logo is illuminated with the OEM MYCOLOR system. Resistant to UV fading and scratches. High-quality adhesives for long-lasting application.

- **420031** ROUSH Ford Mustang Illuminated Door Sill Plates

► INTERIOR VINYL SILL PLATES

1994-2004 FORD MUSTANG



Consists of two bezel inserts that fit into the sill plate areas. Resistant to UV fading and scratches, and flexible for easy installation. High-quality, automotive-grade adhesives. Features ROUSH logo.

- **SM03-5502-A** ROUSH Ford Mustang Interior Vinyl Sill Plates

► ALUMINUM DOOR SILL PLATES

2004-2008 FORD F-150



Includes a set of sill plates, one for each door. Made of high-quality billet aluminum and laser-etched with the ROUSH logo.

- **401982** Ford F-150 Aluminum Door Sill Plates

► ALUMINUM DOOR SILL PLATES

2005-2012 FORD MUSTANG



Includes a set of sill plates, one for each door. Made of high-quality billet aluminum with a laser-etched ROUSH logo.

- **401859** Ford Mustang Aluminum Door Sill Plates

► VENT GAUGE POD

2005-2012 FORD MUSTANG AND  
2004-2008 FORD F-150



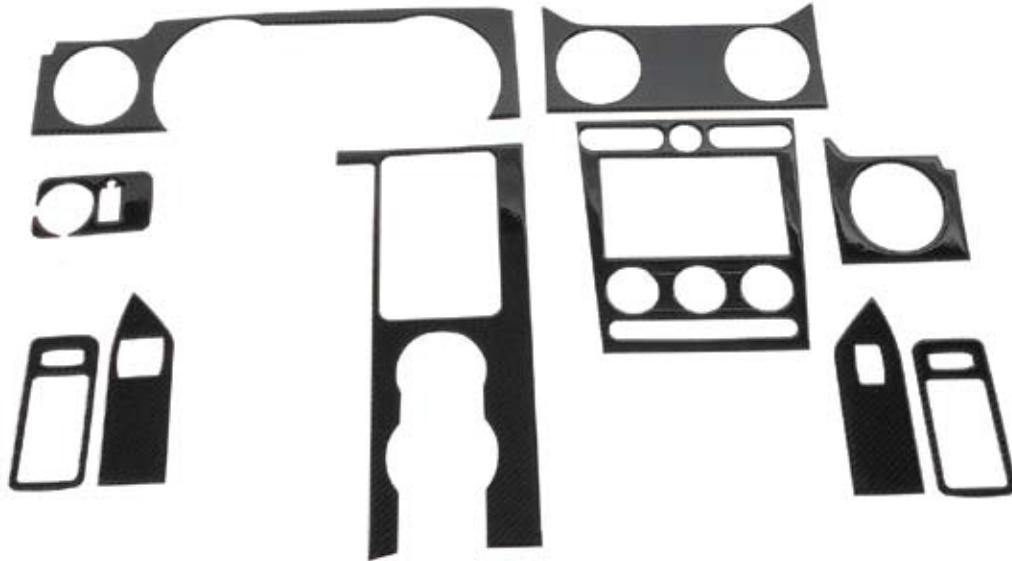
Cleverly designed to integrate in the heating, ventilation and air conditioning (HVAC) vent. Low profile and matches vehicle interior. Requires 2-1/16" gauge (not included).

- **403840** 2005-2009 Ford Mustang and 2004-2008 Ford F-150 Vent Gauge Pod

**404470** 2010-2011 Ford Mustang Vent Gauge Pod

► INTERIOR CARBON FIBER TRIM KIT (ROUSH)

2005-2009 FORD MUSTANG



Consists of bezels that fit over vehicle's existing interior. Made of real carbon fibers. Features high-quality automotive-grade adhesives.

Includes:

- Driver-side power lock and inner door handle
- Driver-side with passenger power window (coupe and convertible)
- Indoor and outdoor lights
- Gauge cluster and driver-side vent
- Center vents
- Passenger vent

- Warning lights with stereo and climate controls
- Shifter and cup holder console
- Passenger-side power window
- Passenger-side power lock and inner door handle
- Fits 2005-2009 Mustangs (convertibles and coupes).

- **403734** Interior Carbon Fiber Trim Kit (Manual Transmission) (ROUSH)

- 403735** Interior Carbon Fiber Trim Kit (Automatic Transmission) (ROUSH)

► 2-1/16" MECHANICAL WHITE VACUUM/BOOST GAUGE



Monitors the vacuum/boost of your ROUSH-charged, supercharged, or turbocharged engine. The gauge reads from -30 to 20 lb. of boost and features a white face. 2-1/16" diameter. Includes vacuum/boost tubing, fittings, and hardware.

- **404360** 2-1/16" Mechanical White Vacuum/ Boost Gauge

► JACK ROUSH CLASSIC SHIFTER

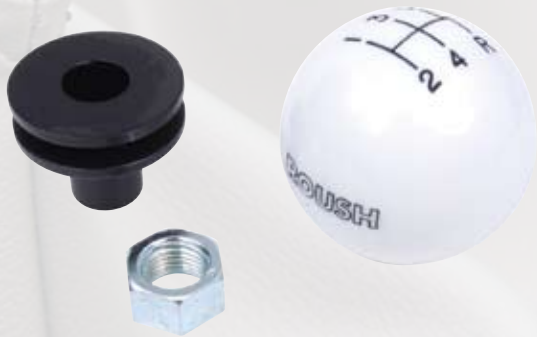
2002-2004 FORD MUSTANG

Fits Mustangs with the Tremec manual transmission only.  
**SM02-5025-JR** Jack Roush Ford Mustang Shifter Handle  
**SM02-5030-A** Jack Roush Ford Mustang Shifter Boot Upgrade  
**SM02-5050-R** Jack Roush Ford Mustang Shifter Knob (requires shifter handle)



► RETRO SHIFTER KNOB (ROUSH)

2005-2012 FORD MUSTANG



Retro-style knob with either the ROUSH Billet Mustang Shifter Arm (part #401969) or the stock shifter. Features the ROUSH logo and 5- or 6-speed shifting pattern.  
► **401584** Ford Mustang White Retro Shifter Knob (ROUSH)  
**401585** Ford Mustang Black Retro Shifter Knob (ROUSH)  
**421122** White 6-Speed Shift Knob with Black Letters, Includes Boot (2011-2012 Mustang)  
**421123** Black 6-Speed Shift Knob with White Letters, Includes Boot (2011-2012 Mustang)

► BILLET SHIFTER KNOB WITH GRIPS (ROUSH)

2005-2012 FORD MUSTANG



Fits the ROUSH Short Shifter (part #401376) or the stock shifter. Features the ROUSH logo, rubber grips and 5-speed shifting pattern.  
► **401427** ROUSH Ford Mustang Billet Shifter Knob with Grips (ROUSH)  
**421121** 6-Speed Billet Shifter Handle with Grips, Includes Boot (2011-2012 Mustang)

► BILLET SHIFTER ARM (ROUSH)

2005-2010 FORD MUSTANG



Fits Mustangs with manual transmissions and requires the Short Throw Shifter (part #401376 or #420037). It is recommended that the ROUSH Retro Shifter Knob (part #401584 or #401585) be used with this shifter arm.  
► **401969** Ford Mustang Billet Shifter Arm

► SHIFTER BOOT

2010-2011 FORD MUSTANG GT



Made of high-quality simulated leather and fits stock shifter. Required part for the ROUSH Billet Mustang Shifter Arm (part #401969) for 2010-2011 Mustangs.  
► **420033** Ford Mustang GT Shifter Boot

► SHORT THROW SHIFTER ASSEMBLY

2005-2010 FORD MUSTANG



Fits the stock manual transmission. Includes both ROUSH-designed shifter body and shifter arm. Front and rear bushings are polyurethane. Permanently lubricated bearing.  
► **420037** Ford Mustang Short Throw Shifter Assembly (2010)  
**401376** Ford Mustang Short Throw Shifter (2005-2009)

► **BILLET PEDAL KIT (ROUSH)**  
1994-2004 FORD MUSTANG



Features ROUSH logo and made of high-quality aluminum. Includes throttle, brake, clutch, and dead pedal.

► **SM94-5300-A** Ford Mustang Billet Pedal Kit (Manual)  
**SM94-5301-A** Ford Mustang Billet Pedal Kit (Automatic)

► **CONSOLE BUTTON (ROUSH)**  
2010-2012 FORD MUSTANG



Upgrade the styling of the interior with the Center Console Push Button. This part features an inscribed ROUSH logo over a real chrome plating finish. This part is made in the U.S.A.

► **420021** Ford Mustang Console Button (ROUSH)

► **BILLET ALUMINUM PEDAL KIT (ROUSH)**  
1997-2008 FORD F-150



For automatic transmissions. Features ROUSH logo and made of high-quality aluminum. Includes pedal covers for throttle and brake.

► **R08050005** ROUSH Ford F-150 Billet Aluminum Pedal Kit

► **BLACK FRONT FLOOR MATS (ROUSH)**  
2004-2008 FORD F-150



Features ROUSH logo. High-quality nylon fibers. Includes two mats: driver side and front passenger.

► **R13040002** Ford F-150 Black Front Floor Mats (ROUSH)

► **BILLET PEDAL KIT (ROUSH)**  
2005-2010 FORD MUSTANG

Includes covers for the throttle, brake, and clutch.

► **401370** Ford Mustang Billet Pedal Kit (Manual)  
**401371** Ford Mustang Billet Pedal Kit (Automatic)



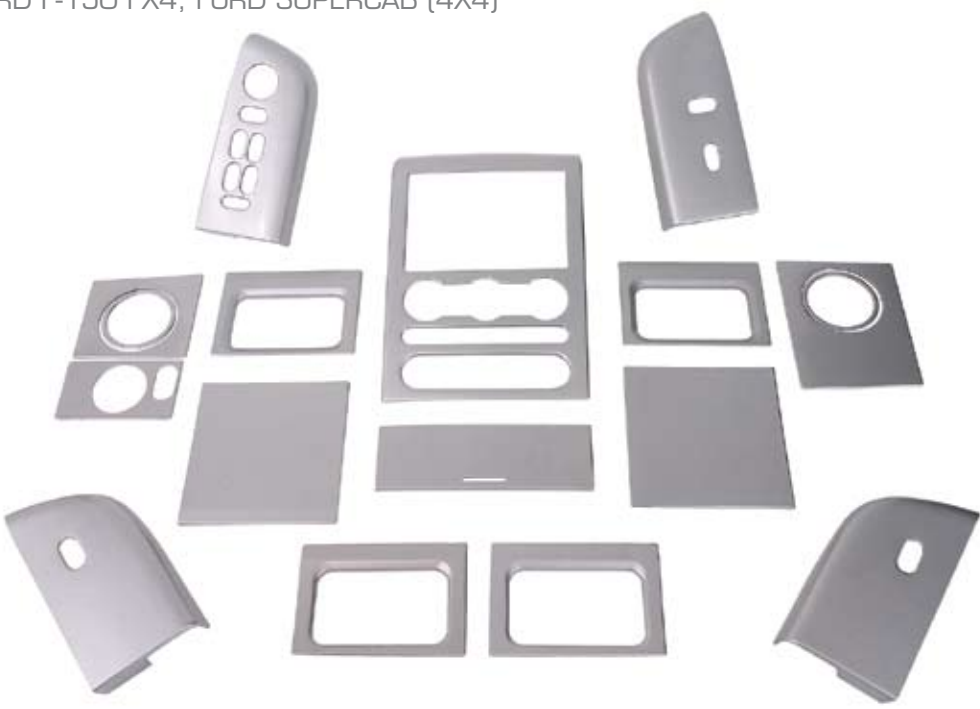
► **BILLET PEDAL KIT (ROUSH)**  
2005-2012 FORD MUSTANG

Features ROUSH logo with black accents. Made of high-quality aluminum. Includes pedal covers for throttle, brake, and clutch. Includes dead pedal.

► **402827** Ford Mustang Billet Pedal Kit (Manual)  
**402828** Ford Mustang Billet Pedal Kit (Automatic)  
**421124** Ford 2011-2012 Mustang Billet Pedal Kit (Manual)  
**421125** Ford 2011-2012 Mustang Billet Pedal Kit (Automatic)



► **ALUMINUM TRIM KIT**  
2004-2008 FORD F-150 FX4, FORD SUPERCAB (4X4)



High-quality aluminum trim kit. Held in place by a quality automotive-grade adhesive tape that is pre-applied to the back of the items.

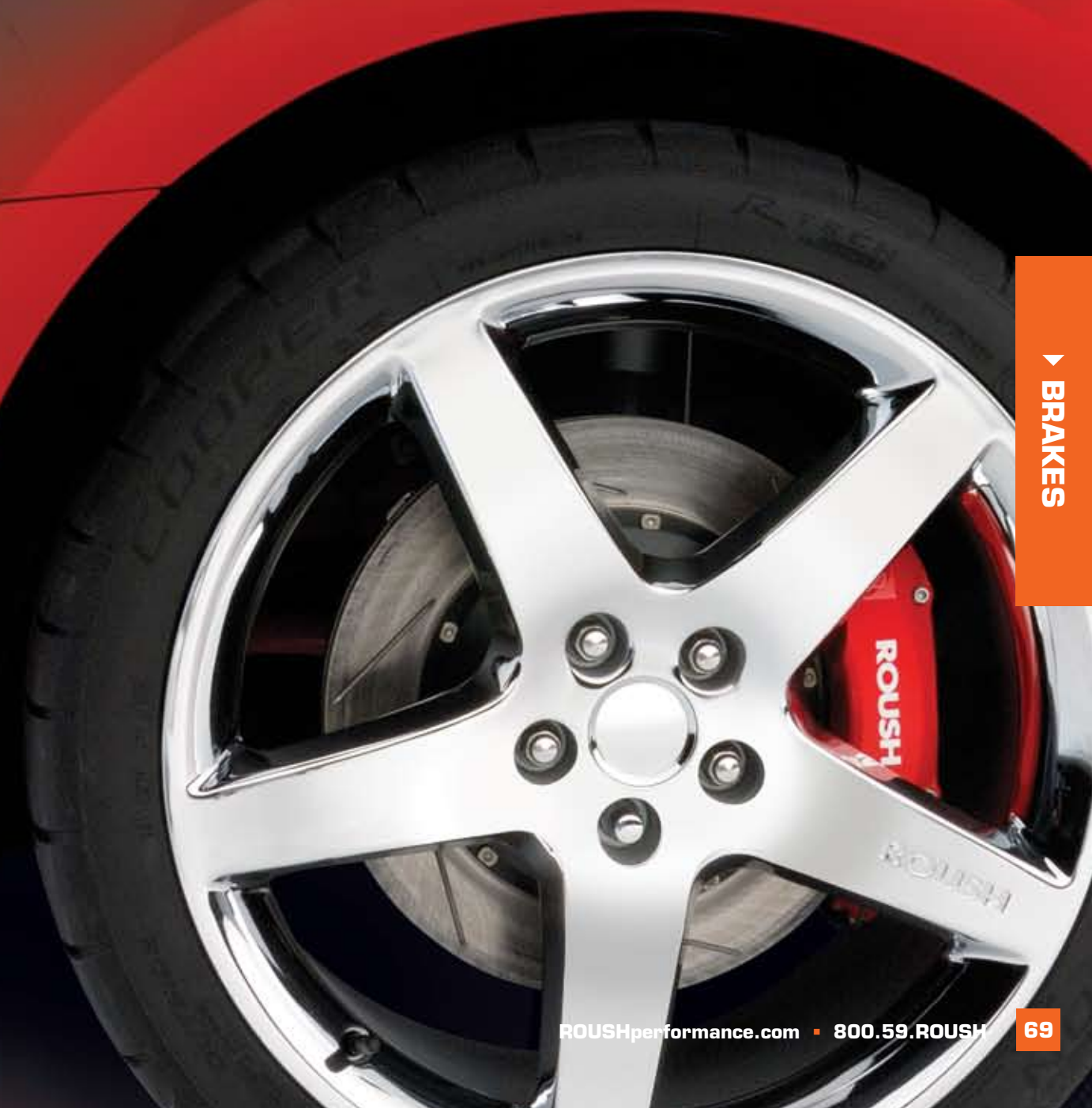
► **401343** Aluminum Trim Kit, F-150 FX4 SuperCab (4x4)

# BRAKES

**E**very ROUSH brake package is extensively engineered and tested by ROUSH's own performance engineers to provide optimum stopping performance for your vehicle. ROUSH brake parts are certified over many hours on the track as well as the street. Rather than simply providing the best quality brake available, ROUSH takes its development a step further by finely tuning its brake offerings to the specific application as part of a whole system. The benefit of this approach is that ROUSH brake parts work seamlessly with the other dynamic aspects of your car. ■

*"Any high-horsepower car needs the ability to stop quickly and safely. Our ROUSH engineering team has developed a line of brake options depending on your specific needs for the street or the track. They not only add a meaty look to the car, but they add the peace of mind knowing that you will stop when you want."*

*— Jack Roush*



▶
 ROUSH 4 PISTON FRONT BRAKE KIT

2005-2012 FORD MUSTANG



Includes four-piston calipers with braided brake lines, Front Brake Pads (part #401471), 14" 2-Piece Front Left Slotted Zinc-Washed Rotor (part #401600) and 14" 2-Piece Front Right Slotted Zinc-Washed Rotor (part #401601). The kit fits 2005-2012 Mustangs with ROUSH 18" wheels or 2011 20" wheels only, to maintain proper caliper clearance.

- ▶
 401599 2005-2012 Ford Mustang High Performance Front Brake Kit

▶
 FRONT BRAKE ROTOR

2005-2012 FORD MUSTANG GT



Both of the front rotors are offered in a single package, the ROUSH High Performance Front Brake Kit (part #401599). Works with both the four-piston (part #401599) and six-piston (part #403144) brake kits. Each rotor sold separately.

- ▶
 401600 2005-2012 Ford Mustang GT Front Left Brake Rotor  
 ▶
 401601 2005-2012 Ford Mustang GT Front Right Brake Rotor

▶
 REAR SLOTTED BRAKE ROTOR KIT

2005-2012 FORD MUSTANG



Works with factory rear calipers. Excellent complement to the Trak Pak Brake Kit (part #403144 and #401599). Includes both left and right slotted rear rotors and all needed hardware for installation.

- ▶
 402683 2005-2012 Ford Mustang Rear Slotted Brake Rotor Kit  
 402684 RH Rotor  
 402685 LH Rotor

▶
 ROUSH 6 PISTON FRONT BRAKE KIT

2005-2012 FORD MUSTANG



Developed specifically for intense braking on the track with shorter stopping distances, better brake modulation, firmer brake pedal, and less brake fade. Highly rigid six-piston front calipers made from forged aluminum and provide for better pedal feel under extreme braking conditions and better distribution of braking force, eliminating radial pad taper. Six-piston design and larger than OEM pads provide for lower pad temperatures and better pad life. Braided stainless steel brake lines provide firmer pedal, faster response, and durable outer cover.

- ▶
 403144 2005-2012 Ford Mustang 6 Piston High Performance Brake Kit

▶
 RACING BRAKE PADS (FRONT)

2005-2012 FORD MUSTANG



For track use only (not for use on the street). These are HT14 racing pads from Hawk Performance. Fit 2005-2012 Mustangs with the High Performance Front Brake Kit (part #401599).

- ▶
 402012 2005-2012 Ford Mustang Front Racing Brake Pads

▶
 RACING BRAKE PADS (REAR)

2005-2012 FORD MUSTANG



For track use only (not for use on the street). These are HT10 racing pads from Hawk Performance. Works with the stock rear calipers.

- ▶
 402013 2005-2012 Ford Mustang Rear Racing Brake Pads

▶
 FRONT BRAKE PADS

2005-2012 FORD MUSTANG



This kit is intended to be used as part of a ROUSH braking system. These pads are also included in the ROUSH High Performance Front Brake Kit (part #401599).

NOTE: When replacing rear brake pads, please use factory Ford pads or equivalent.

- ▶
 401471 2005-2012 Ford Mustang Front Brake Pads

# WHEELS

**G**ive your vehicle sleek and aggressive styling with ROUSH wheels. Simply put, they can make your car look fast even when it's standing still. The wheels in this unique line are designed and built to OE-level quality standards while increasing performance. In addition, ROUSH wheels work as part of a balanced system with other ROUSH part kits, such as the suspension and braking products, to provide an optimized balance between handling and braking. ■

*"When picking out a wheel, look for the performance aspect, as well as the visual appeal. A forged wheel will add strength but not the weight of a cast wheel. On the other hand, cast wheels are strong and are normally a less expensive option. Either way, the ROUSH wheels are going to add a unique style to your ride."*

*— Jack Roush*



▶ 18" X 10" CAST WHEEL

2005-2012 FORD MUSTANG

This cast wheel features a five-spoke design with ROUSH engraving. Each wheel is sold separately, and can be ordered with Cooper Zeon 2XS or RS3 tires. These wheels are compatible with the ROUSH brake systems (part #401599 and #403144).



- ▶ 401305 Cast Wheel
- 401347 2005-2006 LH Wheel and Tire
- 401348 2005-2006 RH Wheel and Tire
- 401994 2007-2009 LH Wheel and Tire w/ TPMS
- 401995 2007-2009 RH Wheel and Tire w/ TPMS
- 404478 2010-2012 LH Wheel and Tire w/ TPMS
- 404479 2010-2012 RH Wheel and Tire w/ TPMS
- 421136 2005-2006 Wheel and Tire w/ RS3 Tire
- 421135 2007-2009 Wheel and Tire w/ RS3 Tire and TPMS
- 421117 2010-2012 Wheel and Tire w/ RS3 Tire and TPMS
- SM99-2400-C Replacement Chrome Center Cap

▶ 20" X 9.5" CAST WHEEL

2005-2012 FORD MUSTANG

This cast wheel is available with or without matching Cooper Zeon RS3 high performance tires. This wheel is made with chrome-plated cast aluminum and features a new ROUSH five-spoke design. Each set of 20" wheels requires one Steering Rack Stops and Clamps Kit (part #404476).



- ▶ 420034 2005-2012 Cast Wheel
- 420153 2005-2006 Wheel and Tire
- 420130 2007-2009 Wheel and Tire w/ TPMS
- 420129 2011-2012 Wheel and Tire w/ TPMS
- 404476 Steering Rack Stops and Clamps Kit (recommended)
- SM99-2400-C Replacement Chrome Center Cap and Screws

▶ 20" X 8.5" CAST WHEEL

2004-2010 FORD F-150

This wheel has a 38 mm offset, classic ROUSH six-spoke hub-centric design. Each wheel is sold separately.



- ▶ R01010002 Cast Wheel
- R01030002 Lug Nut
- SM99-2400-C Replacement Chrome Center Cap

▶ COOPER ZEON 2XS TIRE



Utilizing a racing-inspired tread compound, the Cooper Zeon 2XS offers a number of technologically advanced features, from the construction and tread compound, to its dramatic, tapered tread design. The end result is a tire with outstanding handling performance in wet or dry driving conditions. This premium ultra-high performance summer tire is ideal for consumers looking for performance tires without compromising handling, aggressive looks, grip and reliability of original equipment at an affordable price. The V-, W- and Y-speed-rated 2XS is designed to provide excellent cornering ability and steering response along with optimum wet and dry traction and high-speed capability. As a summer tire, the Cooper Zeon 2XS is not intended to be driven in snow or ice.

- Tire specifications:
- 275/40R18 size; 99W load and speed rating; 280 tread wear; and AA temp rating. Each sold separately.
  - 255/35 R20 size; 97W load and speed rating; 280 tread wear; and AA temp rating. Each sold separately.

- 401651 20" Cooper Zeon 2XS Tire
- ▶ 401658 18" Cooper Zeon 2XS Tire

▶ COOPER ZEON RS3 HIGH PERFORMANCE TIRE



Designed to provide superior performance, the RS3 features a unique tread pattern, profile, and construction. Featuring cutting edge R-Tech technology, this tire delivers maximum dry traction, unrivaled grip with split-second steering response, and a unique footprint that is engineered to deliver consistent handling performance at high G-forces.

The 275/40ZR18 Cooper Zeon RS3 High Performance Tire was designed for ultra performance, and features high-density steel cord belts for increased tread band stiffness and optimized spiral wound nylon restrictor for high-speed stability.

Tire specifications:

- 275/40ZR18 size; 99W load and speed rating; 220 tread wear; and AA temp rating
- 275/35ZR20 size; 102W load and speed rating; 220 tread wear; and AA temp rating

Not recommended for use on snow or ice. Each sold separately.

- ▶ 404085 18" Cooper Zeon RS3
- 420132 20" Cooper Zeon RS3

▶ LOCKING LUG NUT SET

2005-2012 FORD MUSTANG



Protect your wheels with this locking lug nut set. Features a highly unique bolt pattern that only fits its matching socket. Chrome-plated.

- ▶ 401380 Locking Lug Nut Set

▶ WHEEL LOCK KEY BAG



Helps keep lug nuts free of excess moisture, mold, and dirt.

- ▶ 0001-2350-KB Wheel Lock Key Bag

# ACCESSORIES



**G**ive your vehicle additional enhancements with official ROUSH accessories.

These include a wide range of products that add functionality, styling, or simply celebrate ROUSH's racing heritage. This is the section to help turn your car into a personalized ride. ■

▶ CONVERTIBLE STYLING BAR

2005-2012 FORD MUSTANG



Convertible styling bar goes just behind the front seats and includes a rearward facing stop light. When the top is up, the stop light shuts off automatically. Includes required wiring harness. Does not provide roll-over protection.

- ▶ 401550 Charcoal
- 401551 Camel

▶ LIGHT BAR/LIGHT BAR KIT

1999-2004 FORD MUSTANG

The styling bar goes just behind the front seats of convertibles and includes a rearward facing stop light. Includes required wiring harness.

It is recommended that seat belt guides (part #SM99-5400-LH [left]) and #SM99-5400-RH [right]) be purchased in conjunction with this light bar to ensure proper seat belt clearance. A kit that includes the light bar and seat belt guides is available (part #SM99-5K900-DK).

Light Bar Kit includes ROUSH Light Bar (part #SM99-5900-BK), left ROUSH Seat Belt Guide (part #SM99-5400-LH), and right ROUSH Seat Belt Guide (part #SM99-5400-RH).

Does not provide roll-over protection.

- SM99-5900-BK Light Bar (Black)
- SM99-5900-T Light Bar (Tan)
- SM99-5K900-DK Light Bar Kit (Black)
- SM99-5K900-T Light Bar Kit (Tan)

▶ SEAT BELT GUIDES

1999-2004 FORD MUSTANG



Works with convertible light bar to provide proper clearance with the ROUSH 1999-2004 Mustang Convertible Light Bar (part #SM99-5900-T and #SM99-5900-BK). Each sold separately.

Please note this part is included in light bar kits (part #SM99-5K900-T and #SM99-5K900-DK).

- ▶ SM99-5400-LH Ford Mustang Seat Belt Guide (Left Hand)
- ▶ SM99-5400-RH Ford Mustang Seat Belt Guide (Right Hand)

▶ ROUSH FENDER BADGE



Same badge used on production ROUSH Mustangs. Covers the factory holes for the stock "GT" fender badge. Features ROUSH text logo along with ROUSH "Square R" graphic.

- ▶ 0001-S002-R ROUSH Fender Badge
- 404180 Black Chrome ROUSH Fender Badge

▶ ROUSH FRONT FASCIA COVER

2005-2009 FORD MUSTANG



Leather form-fitting front end cover for the ROUSH Front Fascia (part #401422). Will not work without modification on vehicles with license plates mounted on front fascia. NOTE: ROUSH Front Fascia Cover pictured.

- ▶ 402926 ROUSH Front Fascia Cover

▶ CAR BRA

1999-2004 FORD MUSTANG

Fits ROUSH Front Fascia (part #SM99-1100-AA).

Leather form-fitting front end cover is embossed with ROUSH logo.

- ▶ SM01-1150-A Car Bra (Rectangular Fog Lamps)

▶ STORMPROOF CAR COVER

1994-2012 FORD MUSTANG



Protect your car from the elements. Made from the most water resistant yet breathable car cover material on the market. Great solution for most car cover applications, including extended and/or intense periods of rain or snow. Soft to the touch and won't scratch vehicle's finish (vehicle must be clean when cover is applied). Features the ROUSH logo. Includes storage bag.

- ▶ 401740 Stormproof Car Cover (1994-2009)
- ▶ 420175 Stormproof Car Cover (2010-2012)

▶ SILVERGUARD CAR COVER

1994-2012 FORD MUSTANG



Protect your car from the elements. Breathable 300 denier polyester material is soft to the touch and won't scratch vehicle's finish (vehicle must be clean when cover is applied). Features the ROUSH logo. Includes storage bag.

- ▶ 401739 Silverguard Car Cover (1994-2009)
- ▶ 420174 Silverguard Car Cover (2010-2012)

▶ ROUSH SEAT BELT COMFORT SLEEVE



This ROUSH padded seat belt sleeve attaches around the shoulder strap of your seat belt. Fits any vehicle with stock seat belts. Each sold separately. Available in Tan or Black.

- ▶ 0001-5450-T Tan
- ▶ 0001-5450-B Black

▶ **ROUSH REAR DECKLID BADGE**

2005-2009 FORD MUSTANG



Chrome-plated ROUSH Rear Decklid Badge features the square ROUSH “Square R” graphic and ROUSH logo. Replaces stock decklid badge. Includes high-quality adhesive tape.

- ▶ **404089** ROUSH Rear Decklid Badge
- 421137** Black Chrome Badge

▶ **ROUSH REAR DECKLID BADGE**

2010-2012 FORD MUSTANG



Stamp your vehicle with the official ROUSH Rear Decklid Badge. This badge fits 2010-2012 Mustangs. The ROUSH “Square R” graphic is featured in the center of the badge with the ROUSH logo.

This badge replaces stock center portion of factory badge. High-quality adhesive tape and spacer are included, making for an easy and long-lasting installation. No drilling is required.

\*You must reuse your factory badge base

- ▶ **421027** ROUSH Rear Decklid Badge

▶ **TRUNK-MOUNTED TOOL KIT**

2005-2012 FORD MUSTANG



ROUSH Trunk-Mounted Tool Kit comes with a wide assortment of tools: needle-nose pliers, multi-tip screwdriver, four wrenches in a variety of sizes, tire pressure gauge, tire tread measurer, flashlight (with batteries), work gloves, ROUSH medallion, and more.

Includes all required hardware.

**401373** 2005-2009 Trunk-Mounted Tool Kit

- ▶ **420032** 2010-2012 Ford Mustang Trunk-Mounted Tool Kit

▶ **FOG LAMP**

1999-2012 FORD MUSTANG



Improve your vision while driving in bad weather. These lamps will fit 1999-2009 Mustangs with ROUSH front fascias (part #SM01-1K100-AA) and 2012 fascia (part #401422).

Requires proper fog lamp jumper harness for correct installation (1999-2012 Mustangs, part #SM01-6401-AA).

- ▶ **SM01-6400-AL** Fog Lamp

Applications:

1999-2004 **SM01-1K100-AA**  
2005-2009 **401422**  
2010-2012 **420000**

▶ **FOG LAMP JUMPER HARNESS**

1999-2004 FORD MUSTANG



Replaces the factory fog lamp connector so ROUSH fog lamps (part #SM01-6400-AL) can be used. Required for installation of fog lamps with the SM01 front fascia (part #SM01-1K100-AA). Each harness sold separately.

- ▶ **SM01-6401-AA** Fog Lamp Jumper Harness

▶ **STRUT TOWER CAP KITS**

2005-2012 FORD MUSTANG



Made of high-quality billet aluminum. Caps cover bolts coming out of strut tower.

- ▶ **401935** Strut Tower Cap Kit (Features engraved ROUSH logos.)
- ▶ **401936** Strut Tower Cap Kit

▶ **RADIATOR CAP COVER**  
2005-2012 FORD MUSTANG



Made of high-quality billet aluminum. Fits over existing radiator cap and is secured with high-quality double-sided tape.

▶ **401937** Radiator Cap Cover (ROUSH)

▶ **OIL CAP COVER**  
1986-2012 FORD MUSTANG



Made from high-quality billet aluminum. Fits over existing oil cap with high-quality double-sided tape.

▶ **401956** Oil Cap Cover (ROUSH)

▶ **BILLET FUEL DOOR**  
2005-2009 FORD MUSTANG



Made of high-quality billet aluminum. Snaps easily into the fuel door area. Features ROUSH logo.

▶ **403379** Billet Fuel Door

▶ **BILLET FUEL DOOR**  
2004-2008 FORD F-150



Features engraved ROUSH logo and made of high-quality billet aluminum. Snaps easily into the fuel door area of 2004-2008 F-150s.

▶ **401983** Billet Fuel Door

▶ **ROUSH OVAL GRILLE BADGE**  
2005-2008 FORD F-150



This grille badge features the ROUSH logo, and adheres on top of the existing (large) Ford emblem on the front grille.

▶ **401594** ROUSH Oval Grille Badge (Large)

▶ **401595** ROUSH Oval Grille Badge (Small)

NOTE: Large = 81 mm x 31 mm and Small = 80 mm x 30 mm



▶ ESCORT® REDLINE RADAR DETECTOR



RedLine provides the longest range for every signal out there. Its twin-antennae design allows it to maximize performance by band, giving you the longest warning possible.

The ESCORT® RedLine is the most advanced radar, laser, and safety detector ever designed by ESCORT®. The ESCORT® RedLine includes full X, K, SuperWide Ka, and Safety Warning System radar capability, front and rear laser detection, dual antennae with varactor-tuned (VTO) microwave receiver, digital signal processing (DSP) for superior range and reduced false alarms, our patented Mute and AutoMute, audible and visual band alerts, and all the performance you'd expect from ESCORT®.

▶ 420251 ESCORT® Redline Radar Detector

▶ ESCORT® PASSPORT Qi45™ RADAR DETECTOR



Introducing the Passport Qi45™ (or "Quick Install" as we call it internally), a fully integrated, high-performance radar and laser detector system. It offers the convenience of built-in discreet security yet installs in dramatically less time and with fewer components than all other integrated detection systems. The bottom line is significant cost savings over all other installed radar detectors. The Passport Qi45™ was designed to be installed in 1 hour or less. How's that for reducing installation time? You can do it yourself or contact us to learn more about our nationwide network of professionals offering worry-free affordable installation.

▶ 420250 ESCORT® Passport Qi45 Radar Detector

▶ ESCORT® PASSPORT 9500ix RADAR DETECTOR



GPS-powered PASSPORT 9500ix, is no exception. It provides the best long-range protection against every known radar and laser gun in use in North America, but also incorporates GPS accuracy to silence each and every false alert. We then added a new automatic way of eliminating false alarms called "AutoLearn". This remarkable new feature utilizes our patented GPS technology to identify and eliminate false alarms automatically while you drive using artificial intelligence. Now, the only alerts you will get are the ones that really count! The result is the best possible protection that only ESCORT® can provide, without the constant distractions of false alarms. It is by far the most intelligent, fully automatic radar and laser detector ever designed.

▶ 420173 ESCORT® Passport 9500ix Radar Detector

▶ ESCORT® PASSPORT 9500ci RADAR DETECTOR



The all-new PASSPORT 9500ci offers radar laser sensitivity second to none. In addition to everything learned from the award-winning 9500i windshield model, added artificial intelligence automatically learns the source of all signals. False alerts are permanently locked out (over time), while real threats are processed in less than 1/2 second. Features ultimate in custom-installed discreet protection, precise laser shifting technology\*, 360-degree protection, blistering all-band radar protection, completely undetectable to all "Detector Scanners", variable-speed radar performance, GPS-powered Truelock filter, mark location features, adaptive signal processing, speed alert, crystal-clear voice alerts, database compatible (safety cameras, speed traps, etc.), user-selectable preferences, high-resolution brilliant blue display, 5 levels of brightness control, Mute, AutoMute & SmartMute, safety warning system, 60 specific safety messages. Comes fully equipped with a comprehensive owner's manual and installation guide, separate miniature controller and text display, front-mounted radar receiver, twin front-mounted laser receivers/shifters, rear license plate mounted laser receiver/shifter, 12-volt interface module, GPS antenna, 12-volt amplified speaker, display bezel, bi-color LED, and all mounting hardware.

\*Laser shifting feature may be limited or prohibited in some jurisdictions. Check applicable laws before using.

▶ 404062 ESCORT® Passport 9500ci Radar Detector

▶ PASSPORT 8500 X50 RADAR DETECTOR



Hailed as the most revolutionary radar/laser detector ever. Provides extreme detection range on all police radar; conventional and “instant-on” radar. Digital signal processing (DSP) provides maximum range, with minimum false alarms. Features blistering all-band protection, 360-degree radar and laser detection, advanced digital signal processing, AutoSensitivity Mode automatically reduces false alarms, EZ-Programming allows instant customization, selectable POP Mode radar detection, 3 high-resolution meter modes, ultra-bright matrix display with 280 LEDs, brilliant blue or high-intensity red display, multiple high-performance laser sensors, built-in earphone jack, Mute & AutoMute, SmartCord and travel case included. Completely immune to the VG-2 “Detector-Detector”. 1-year limited warranty.

- ▶ 404059 Passport 8500 X50 Radar Detector – Blue
- ▶ 404060 Passport 8500 X50 Radar Detector – Red

▶ SOLO S2 CORDLESS RADAR DETECTOR



Cordless SOLO S2 radar and laser detector provides portable convenience and protection. Just stick to windshield, turn it on, and go. Features: blistering all-band protection, 360-degree radar and laser detection, convenient cordless design uses 2 AA batteries (included), advanced digital signal processing, AutoSensitivity mode virtually eliminates false alarms, ultra-performance laser protection, completely immune to the VG-2 “Detector-Detector”, 10 user-programmable features, high resolution graphic LCD display, built-in earphone jack, patented ESCORT® technology, optional SmartCord compatible. Limited 1-year warranty. Batteries and travel case included.

- ▶ 404061 SOLO S2 Cordless Radar Detector

▶ ESCORT® ENTOURAGE™ PS



Experience truly portable security and location awareness for your vehicles and other belongings with ESCORT® Entourage™ PS, combining always-on GPS tracking, tamper-sensing technology and instant security alerting through e-mail and text message. Discover real portability with the UltimateSense™ antenna that makes it easy to hide the PS in a variety of places. Real location awareness lets you share your vehicle's movements with people you know on their Blackberry® smart phones or browser-enabled mobile phones and computers. And real security takes the guesswork out of security by automatically setting a new ‘security zone’ when armed, and alerts you when it's been compromised. These features and more make choosing Entourage PS real easy.

\*Activation and Subscription Plan required for use

- ▶ 420247 ESCORT® Entourage PS

▶ DIRECT WIRE SMARTCORDS



This handy accessory for ESCORT® radar detectors provides a mute button, a red alert light, and a green power light in an inline module. FOR RADAR DETECTOR MODELS: Passport: 9500i, 8500 X50, 8500, 7500S, 7500, 6800, SOLO: S2.

- ▶ 404063 Direct Wire SmartCords – Red
- ▶ 404064 Direct Wire SmartCords – Blue

▶ ESCORT® ENTOURAGE™ CIS



Protect, share and connect with ESCORT® Entourage™ CIS, the most effective permanently installed vehicle protection system, combining always-on GPS tracking with instant mobile text message and web alerts, motion-sensing technology and the exclusive GPS Monitoring and Recovery Service option, should your vehicle be stolen. Enjoy maximum security and convenience with the MyPass™ key fob that automatically arms and disarms the CIS. Maximum location awareness lets you share your vehicle's movements with people you know. And ultimately, experience maximum peace-of-mind knowing that you own the one vehicle security system that provides you with an unequalled extra layer of assurance for the things you value most.

\*Activation and Subscription Plan required for use.

- ▶ 420248 ESCORT® Entourage CIS

▶ ESCORT® LASER SHIFTER PACK



The Qi45™ Shifter Pack allows you to easily add Laser Shifting technology to the Qi45™ at any time. Simply plug in these shifters (front) to the front radar receiver and increase your overall level of protection. No need to pull any additional wires through the firewall!

- ▶ 420252 ESCORT® Laser Shifter Pack

# SERVICE PARTS

*It is a challenge to take a fresh approach to typical replacement auto parts. But that's exactly what ROUSH Performance has done with their new line of service parts. As with everything else that ROUSH does, its new service parts line embodies the vision to provide the best quality products possible. ■*



## ROUSH BRINGS INNOVATION TO REPLACEMENT CAR PARTS



Superior quality and performance engineering ... expect nothing less from Roush's line of service parts. This lineup includes ROUSH air and oil filters, and headlamps.

The new ROUSH oil filters hold twice the capacity of the leading brand, and offer a high-efficiency 99.2 percent contaminants capture rate thanks to the superior cellulose and synthetic blend material used in the filter material.

The heavy-duty case is designed to withstand five times the typical engine operating pressure; this results in not only the ability to better withstand the cold start surges but also enhanced protection from road debris. A "no-stick," internally-lubricated, low torque gasket allows for a tight seal, as well as easy removal, and the silicone anti-drainback valve keeps the oil in the canister and prevents against dry starts.

### OIL FILTERS

- Oil Filter #RF2835 (part #404389; replaces Motorcraft part #FL910)
- Oil Filter #RF8A (part #404391; replaces Motorcraft part #FL1A)
- Oil Filter #RF820 (part #404395; replaces Motorcraft part #FL820s)
- Oil Filter #RF400 (part #404393; replaces Motorcraft part #FL400s)

The ROUSH air filters utilize a specially-blended filter media for optimal dirt-holding capacity and filtering, as well as protects the engine from airborne contaminants and helps prevent upper cylinder wear. Fuel efficiency can be improved up to 10 percent with regular air filter changes every 12,000 miles.

### AIR FILTERS

- Air Filter #RF1615 (part #404397; replaces Motorcraft part #FA1615)
- Air Filter #RF1754 (part #404401; replaces Motorcraft part #FA1754)
- Air Filter #RF3598 (part #404399; replaces Motorcraft part #FA1773)
- Air Filter #RF2883 (part #404403; replaces Motorcraft part #FA2833)

ROUSH vivid headlamp bulbs provide a truer, whiter light for improved driver visibility while negating the offensive, blue glare often associated with high-intensity bulbs. These bulbs use an exclusive SpectraFilter technology that meets or exceeds all OE performance and quality specifications, as well as provides better visibility than a standard halogen lamp.

### HEADLAMPS

- Headlamp #R9003V (part #404445; fits standard 9003 headlamp applications)
- Headlamp #R9004V (part #404446; fits standard 9004 headlamp applications)
- Headlamp #R9005V (part #404447; fits standard 9005 headlamp applications)
- Headlamp #R9006V (part #404448; fits standard 9006 headlamp applications)
- Headlamp #R9007V (part #404449; fits standard 9007 headlamp applications)

*"People recognize the ROUSH brand as one that offers exceptional products that bring superior performance to their vehicle. Even in the type of items that people don't normally think much about — such as filters and headlamp bulbs — there can be a huge difference in both quality and operation. I am proud that the ROUSH offerings among these replaceable items include the type of innovation and quality that the buyer expects from our brand," stated Jack Roush.*

The ROUSH service parts line is designed to fit most late model Ford cars and trucks. To see the application guides, or for more information on the ROUSH service parts, visit [www.ROUSHperformance.com/serviceparts](http://www.ROUSHperformance.com/serviceparts).

# ROUSH GEAR

**R**OUGH is the winningest name in racing, with numerous championships in professional drag racing, road racing, and NASCAR. As a company, ROUSH is recognized internationally as a premier provider of automotive product development and systems integration solutions. The company's success remains deeply rooted in the core values that are unique to ROUSH: reliance upon the talent of the individual, a disciplined work ethic, scrupulous attention to detail, and an acutely intense desire to be the best. Celebrate and share in this rich heritage with official ROUSH merchandise. ■



▶ MEN’S PERFORMANCE PIQUE POLO SHIRT



100% polyester with antimicrobial and moisture-wicking finish. Solid pique body. Matching solid flat knit collar. Easy care. Features ROUSH embroidery on the front chest.

- ▶ Red
  - 421115 Red – S
  - 421028 Red – M
  - 421029 Red – L
  - 421030 Red – XL
  - 421031 Red – XXL
- ▶ White
  - 421032 White – S
  - 404314 White – M
  - 404315 White – L
  - 404316 White – XL
  - 404317 White – XXL
- ▶ Black Silk
  - 421033 Black Silk – S
  - 421034 Black Silk – M
  - 421035 Black Silk – L
  - 421036 Black Silk – XL
  - 421037 Black Silk – XXL

▶ RED “ROUSH CREW” T-SHIRT



Durable cotton fabric. Short sleeves.

- ▶ 401669 Red – M
- 401670 Red – L
- 401671 Red – XL
- 401672 Red – XXL

▶ BLACK STAGE 3 MUSTANG T-SHIRT



Features ROUSH logo in white on front and ROUSH Stage 3 Mustang graphic on back.

- ▶ 402950 Black – M
  - 402951 Black – L
  - 402952 Black – XL
  - 402953 Black – XXL
  - 402954 Black – XXXL
- NOTE: Limited quantities available.

▶ WHITE 2010 427R T-SHIRT



White 100% cotton T-shirt featuring the 427R logo on front and a 2010 427R Mustang plus the ROUSH logo screened on back.

- ▶ 420213 White – S
  - 420214 White – M
  - 420215 White – L
  - 420216 White – XL
  - 420217 White – XXL
- NOTE: Limited quantities available.

▶ ROUSH “SQUARE R” T-SHIRT



50/50 Ultra blend T-shirt, ROUSH screened in red of front, “Square R” screened in white/red on back.

- ▶ 421073 Black – S
- 421074 Black – M
- 421075 Black – L
- 421076 Black – XL
- 421077 Black – XXL

▶ WOMEN’S CREW NECK JERSEY T-SHIRT



Women’s 4.2 oz. pre-shrunk 100% cotton jersey crew neck T-shirt with unique ROUSH design screened on front.

- ▶ 421048 White – S
  - 421049 White – M
  - 421050 White – L
  - 421051 White – XL
  - 421052 White – XXL
  - 421053 Cardinal – S
  - 421054 Cardinal – M
  - 421055 Cardinal – L
  - 421056 Cardinal – XL
  - 421057 Cardinal – XXL
- NOTE: Limited quantities available.

▶ WOMEN’S CHAMPION HOODED SWEATSHIRT



Women’s 80% cotton/20% polyester Double Dry® Hydrotec pullover hooded fleece sweatshirt with front pouch pockets. Features a unique ROUSH design on the front.

- ▶ 421078 White – S
  - 421079 White – M
  - 421080 White – L
  - 421081 White – XL
- NOTE: Limited quantities available.

▶ BLACK “SQUARE R” HAT



ROUSH embroidered on back (Dk Grey).  
“Square R” embroidered on front (Dk Grey).

▶ 421082 Black – SM/MD  
421083 Black – LG/XL

▶ WHITE “SQUARE R” HAT



ROUSH embroidered on back (Blk). “Square R” embroidered on front (Blk/Red).

▶ 421084 White – SM/MD  
421085 White – LG/XL

▶ “SQUARE R” CHINO HATS



“Square R” embroidered on front. ROUSH embroidered on back.

▶ 421086 Charcoal  
421087 Khaki

▶ NEW ERA 427R HAT



This hat is consists of a black New Era base hat made from 100% cotton fabric, and has a structured, high profile and six panels with seven-position adjustable snap. This new style has an iconic flat bill, adjustable closure, and unique 427R branding on the front.

▶ 420172 Black

▶ NEW ERA “SQUARE R” HAT



This hat is consists of a black New Era base hat made from 100% cotton fabric, and has a structured, high profile and six panels with seven-position adjustable snap. This new style has an iconic flat bill, adjustable closure, and unique ROUSH fender badge logo branding on the front.

▶ 420171 Black

▶ CHARCOAL AND BLACK SIGNATURE HAT



This hat is made from charcoal gray heavy cotton and features the ROUSH logo in black embroidery. Also featured are black accent lines on the edge of the bill and going up the front sides of the hat. Along the side of the hat is the embroidered signature of Jack Roush. The hat has six structured panels, a low profile pre-curved peak, and a short touch strap for an adjustable fit.

▶ 420169 Charcoal and Black  
NOTE: Limited quantities available.

▶ GREY TIRE TRACK HAT



This hat has gray fabric with black tire tracks and features the ROUSH logo in black embroidery. The hat has six structured panels, a low profile pre-curved peak, and a short-touch strap for an adjustable fit.

▶ 420161 Grey Tire Track Hat  
NOTE: Limited quantities available.

▶ RED AND GREY BASEBALL CAP



Red and grey baseball cap with white stitching. ROUSH logo embroidered in two tones.

▶ 404151 Red and Grey Baseball Cap

▶ NAVY AND IVORY BRUSHED HAT



▶ 404009 Navy and Ivory Brushed Hat  
NOTE: Limited quantities available.

▶ PINK WOMEN’S WATER REPELLENT HAT



Women’s water repellent baseball cap. Features ROUSH logo on front in darker pink embroidery. Adjustable to fit most head sizes.

▶ 404008 Pink Women’s Water Repellent Hat

▶ GRAPHITE BRUSHED HAT



Graphite brushed baseball cap. Graphite (dark gray) with ROUSH logo in gray embroidery. Made of polysonic material for comfort and resistance to water. Adjustable to fit most head sizes.

▶ 404005 Graphite Brushed Hat  
NOTE: Limited quantities available.

▶ BLUE CHECKERED FLAG HAT



This hat is made from navy brushed heavy cotton and features the ROUSH logo in silver embroidery. The graphic element of the hat is a stylized navy blue checkered flag that goes across the bill of the cap. The hat has six structured panels, a low profile pre-curved peak, and a buckle strap for an adjustable fit.

▶ 420166 Blue Checkered Flag Hat  
NOTE: Limited quantities available.

▶ RED AND BLACK CHECKERED HAT



This hat is made from black brushed cotton and features the ROUSH logo in red embroidery. The graphic on the hat is a race-inspired checkered flag with a red swoosh. The hat has six structured panels, a low profile pre-curved peak, and a short touch strap for an adjustable fit.

▶ 420165 Red and Black Checkered Hat  
NOTE: Limited quantities available.

▶ WASHED CHINO TWILL HAT



This hat comes in the distressed black fabric and features the ROUSH logo in black embroidery. The hat has six structured panels, a low profile pre-curved peak, and a buckle strap for an adjustable fit.

▶ 420162 Washed Chino Twill Hat  
NOTE: Limited quantities available.

▶ 2010 427R CAN KOOZIE



Keep your drink cold and your hands warm with the ROUSH 427R can koozie. Black background and features official 427R logo.

▶ 421092 Black 2010 427R Can Koozie

▶ “SQUARE R” CAN KOOZIE



Keep your drink cold and your hands warm with the ROUSH “Square R” logo can koozie. Black background and features the official ROUSH fender badge logo, as seen on the ROUSH Mustang.

▶ 421091 Black “Square R” Can Koozie

▶ THERMOS STAINLESS STEEL MUG



16 oz., 8” tall ROUSH-branded travel tumbler with double wall foam insulation that retains hot or cold temperatures. Unbreakable stainless steel exterior with easy-to-clean plastic liner, comfortable rubber grip, scratch-resistant base. Screw on spill- resistant slide-lock lid. Fits most automotive cup holders.

▶ 421088 Thermos Travel Mug

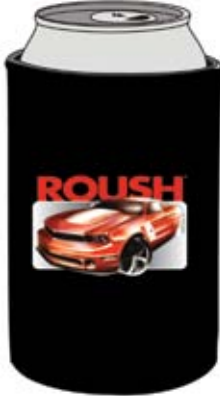
▶ CLASSIC CERAMIC COFFEE MUG



16 oz. barrel mug with a glossy black finish, features both the “Square R” ROUSH fender badge logo as well as the ROUSH logo.

▶ 421089 Coffee Mug

▶ 2010 ROUSH MUSTANG CAN KOOZIE



Keep your drink cold and your hands warm with the ROUSH Mustang can koozie. Black background and features an original sketch design of the 2010 ROUSH Mustang by one of the ROUSH designers.

▶ 421093 Black ROUSH Mustang Can Koozie

▶ WHITE P-51A CAN KOOZIE



Keep your drink cold and your hands warm with the ROUSH P-51A can koozie. White background and features ROUSH P-51A Mustang.

▶ 404025 White P-51A Can Koozie

▶ “SQUARE R” MOUSE PAD



Medium-duty rubber with hard surface mouse pad featuring the ROUSH fender badge logo. Measures 1/8” x 8” x 9.5”.

▶ 421090 Mouse Pad

▶ LED FLASHLIGHT



Compact LED flashlight gives off a brilliant white light and is ROUSH laser-engraved.

▶ 404032 Red  
NOTE: Limited quantities available.

▶ FENDER COVER

Made from a material that grips tools, preventing them from falling off the side. Features ROUSH logo.

- ▶ 0002-1500-FC Fender Cover



▶ CAR SUN SHADE

Keep the heat out with this silver ROUSH-branded car sun shade.

- ▶ 404017 Car Sun Shade



▶ LICENSE PLATE FRAME



- ▶ 402053 License Plate Frame

▶ LICENSE PLATE



- Works with standard license plate, and can be used on your show car, street car, wall, desk, or anywhere else. Made of high-quality plastic for longevity.
- ▶ 401858 License Plate

▶ THIRSTY STONE AUTO COASTER



- Measures 2-9/16" diameter and fits many vehicle cup holders, including 2005-2009 Mustangs. Features ROUSH text logo, with "Square R" graphic and a flame design in the background.
- ▶ 403115 Thirsty Stone Auto Coaster

▶ KEY HOLDER



- Stainless steel ROUSH "Square R" logo key holder.
- ▶ 404016 Key Holder

# GENERAL INFORMATION

## ORDERING INFORMATION

### GENERAL INFORMATION ABOUT PRODUCT

In the Motorsports industry, the ROUSH® name equates to quality, high-powered performance which translates to the automotive performance products ROUSH Performance offers you, our customer. Because many of the products in this catalog are only for specific applications, please make sure that the product you order is for the make and model of vehicle you intend to install it on. You are responsible for inspecting each product you purchase and receive from us before installation. **ONCE YOU INSTALL OR PAINT ANY PRODUCT, IT IS NOT RETURNABLE.** Further, unless otherwise noted, all products are sold as individual pieces.

### HOW TO ORDER

Retail orders for any of the products found in this catalog can be placed through our website at <http://www.ROUSHperformance.com>, or by calling ROUSH direct at **800.59.ROUSH (800.59.76874)**, or by contacting any ROUSH® dealer listed on our “**Dealer Locator**” page by going to <http://www.ROUSHperformance.com>. Professional body shops or non-ROUSH® dealers should contact ROUSH direct at **800-59.ROUSH**, or a local wholesale distributor, also listed on our website <http://www.ROUSHperformance.com>, that sells ROUSH® product(s).

### TERMS OF SALE

All product orders are subject to Roush's Terms and Conditions of Sale, which are available at the <http://www.ROUSHperformance.com> website under the “Terms of Sale” link located at the bottom of the webpage.

### SHIPPING AND HANDLING CHARGES

For Roush's current shipping and handling charges, please refer to Roush's Terms and Conditions of Sale, which are available at the <http://www.ROUSHperformance.com> website under the “Terms of Sale” link located at the bottom of the webpage.

### TEXT, PRICING AND PHOTOGRAPHS; DISCLAIMER

Typographical errors in text, content, pricing and photographs of products found in this catalog may occur and are subject to correction by ROUSH.

ROUSH's Terms and Conditions of Sale and policies as well as product(s) warranties, pricing, specifications, and availability are all subject to change without notice. Compliance with all Federal, National, State, Provincial or local laws are your responsibility. Any claims by ROUSH regarding, without limitation, product(s) performance are based on controlled tests and actual results may vary based on your particular application. Due to availability and upgrades, the product(s) you receive could be different from photographs shown in this catalog. ROUSH shall not be liable to you for, without limitation, any ticketed violations or fines incurred by you and arising from the installation of any part or system sold from this catalog.

### ROUSH® PARTS AND ACCESSORIES – LIMITED WARRANTY

ROUSH's warranty obligations for ROUSH® Parts and Accessories (individually and collectively “Part(s)”) is limited to defects in materials and workmanship, as solely determined after ROUSH's careful inspection, for that period identified in the policies below that begins on the date of retail purchase by the original end-user purchaser (“Warranty Period”).

Warranty Period: 90 Days from the date of retail purchase by the original end-user purchaser.

\*Excludes ROUSH Wheels; ROUSHcharger®; ROUSH® Overstock; Non-ROUSH Parts and Accessories and ROUSH® Competition Parts which the warranty coverage for the foregoing, if any, is separate from that explained here.

For specific warranty information and applicable exclusion and limitations for ROUSH® Parts and Accessories, refer to [www.ROUSHperformance.com](http://www.ROUSHperformance.com) website under the “Limited Warranty” link located at the bottom of the webpage.

### ROUSH® WHEELS – LIMITED WARRANTY

FORGED WHEELS, CAST/LIQUID WHEELS, and PAINTED WHEELS  
The wheel finish is covered for the earlier of 1 year or 12,000 miles from the date of retail purchase by the original end-user purchaser. If tires are included with the purchase of wheel(s), they are separately warranted by the tire manufacturer.

For specific warranty information and applicable exclusions and limitations for all ROUSH® Wheels, refer to [www.ROUSHperformance.com](http://www.ROUSHperformance.com) website under the “Limited Warranty” link located at the bottom of the webpage.

### ROUSHcharger® – LIMITED WARRANTY

For specific warranty information and applicable exclusions and limitations for all ROUSHcharger® products, refer to [www.ROUSHperformance.com](http://www.ROUSHperformance.com) website under the “Limited Warranty” link located at the bottom of the webpage.

### ROUSH® OVERSTOCK – NO WARRANTY

All products offered on ROUSH® OVERSTOCK are overstocked product and may be the last of their kind in our inventory. Since **ALL SALES ARE FINAL AND CANNOT BE RETURNED OR EXCHANGED**, please make sure the product you purchase is for your specific application including the make and model of the vehicle you intend to install it on. EACH PRODUCT PURCHASED FROM ROUSH® OVERSTOCK IS A FINAL SALE AND IS SOLD “AS IS”, “WHERE IS”, “WITH ALL FAULTS”, AND WITHOUT ANY EXPRESS GUARANTEES OR WARRANTIES WHATSOEVER. TO THE GREATEST EXTENT PERMITTED BY STATE AND FEDERAL LAW, ROUSH® DISCLAIMS ALL EXPRESS AND IMPLIED WARRANTIES INCLUDING, WITHOUT LIMITATION, THE WARRANTIES OF MERCHANTABILITY AND FITNESS FOR A PARTICULAR PURPOSE; REGARDLESS IF A PARTICULAR PURPOSE IS IDENTIFIED IN ASSOCIATION WITH THE PRODUCT INCLUDING, WITHOUT LIMITATION, ANY DESCRIPTION OF THE PRODUCT OR AS A RESULT OF REPRESENTATIONS MADE BY ROUSH® OR ANY RESELLER OF THE PRODUCT PURCHASED FROM ROUSH® OVERSTOCK. ROUSH® EXPRESSLY DISCLAIMS ALL LIABILITY FOR DIRECT, INDIRECT, SPECIAL INCIDENTAL, CONSEQUENTIAL, OR PUNITIVE DAMAGES (REGARDLESS IF ROUSH® HAS BEEN NOTIFIED OF THE POSSIBILITY OF SUCH DAMAGE), INCLUDING, WITHOUT LIMITATION, INJURY TO PERSONS INCLUDING DEATH; DAMAGE TO OR LOSS OF PROPERTY OR EQUIPMENT; COST OF LABOR; LOSS OF PROFITS, WINNINGS OR REVENUE; COST OF PURCHASE, COST OF SUBSTITUTE PRODUCTS OR REPLACEMENT OF GOODS; THE COST OF OR ANY VEHICLE COMPONENTS OR PARTS AFFECTED BY, THE PRODUCT PURCHASED FROM ROUSH® OVERSTOCK; DOWN TIME COSTS; CLAIMS OF BUYER'S END USERS FOR SUCH DAMAGES THAT WERE IN ANY WAY DERIVED OR RESULTED FROM THE RECOMMENDATION, INSTALLATION OR USE OF THE PRODUCT PURCHASED FROM ROUSH® OVERSTOCK.

### NON-ROUSH PARTS AND ACCESSORIES – NO WARRANTY

NON-ROUSH PRODUCTS PURCHASED AT ROUSHPERFORMANCE.COM CARRY THE DIRECT MANUFACTURER'S WARRANTY AND ARE NOT COVERED UNDER THE ROUSH PERFORMANCE PARTS AND ACCESSORIES LIMITED WARRANTY. IF YOU NEED A COPY OF THE MANUFACTURER'S WARRANTY FOR A PRODUCT SOLD BY ROUSHPERFORMANCE.COM, SUCH AS FORD RACING, GO PRO, ESCORT, OR MECHANIX WEAR, PLEASE CONTACT THE MANUFACTURER OR VISIT THEIR WEBSITE FOR MORE INFORMATION.

**FORD RACING:** 800-FORD788 <http://www.fordracingparts.com/home/home.asp>

**GO PRO:** 415.738.2480 option 3 <http://www.goprocamera.com/warranty>

**ESCORT:** 800-543-1608 <http://www.escortradar.com/returns-exchanges.php>

**MECHANIX WEAR:** 800-222-4296 <http://www.mechanix.com/customer-service#warranty>

### ROUSH® COMPETITION PARTS – NO WARRANTY




EACH ROUSH® COMPETITION PART IS SOLD “AS IS”, “WHERE IS”, “WITH ALL FAULTS”, AND WITHOUT ANY EXPRESS GUARANTEES OR WARRANTIES WHATSOEVER. TO THE GREATEST EXTENT PERMITTED BY STATE AND FEDERAL LAW, ROUSH® DISCLAIMS ALL EXPRESS AND IMPLIED WARRANTIES INCLUDING, WITHOUT LIMITATION, THE WARRANTIES OF MERCHANTABILITY AND FITNESS FOR A PARTICULAR PURPOSE; REGARDLESS IF A PARTICULAR PURPOSE IS IDENTIFIED IN ASSOCIATION WITH THE ROUSH® COMPETITION PART INCLUDING, WITHOUT LIMITATION, ANY SALES LITERATURE OR AS A RESULT OF REPRESENTATIONS MADE BY ROUSH® OR ANY PARTY SELLING OR PROVIDING ROUSH® COMPETITION PARTS. ROUSH® EXPRESSLY DISCLAIMS ALL LIABILITY FOR DIRECT, INDIRECT, SPECIAL INCIDENTAL, PUNITIVE, OR CONSEQUENTIAL DAMAGES (REGARDLESS IF ROUSH® HAS BEEN NOTIFIED OF THE POSSIBILITY OF SUCH DAMAGE), INCLUDING, WITHOUT LIMITATION, INJURY TO PERSONS INCLUDING DEATH; DAMAGE TO OR LOSS OF PROPERTY OR EQUIPMENT; COST OF LABOR; LOSS OF PROFITS, WINNINGS OR REVENUE; COST OF PURCHASE, COST OF SUBSTITUTE PRODUCTS OR REPLACEMENT OF GOODS; THE COST OF ROUSH® COMPETITION PARTS OR ANY VEHICLE COMPONENTS OR PARTS AFFECTED BY THE ROUSH® COMPETITION PARTS; DOWN TIME COSTS; CLAIMS OF BUYER'S END USERS FOR SUCH DAMAGES THAT WERE IN ANY WAY DERIVED OR RESULTED FROM THE RECOMMENDATION, INSTALLATION OR USE OF ROUSH® COMPETITION PARTS.

Refer to <http://www.ROUSHperformance.com> website under the “Limited Warranty” link located at the bottom of the webpage for more information about ROUSH® Competition Parts including additional exclusions and limitations.

### WARRANTY EXCLUSIONS AND LIMITATIONS

Warranty exclusions and limitations, if any, for products shown in this catalog are available at <http://www.ROUSHperformance.com> website under the “limited warranty” link located at the bottom of the webpage.

### TRADEMARKS

“ROUSH®”, ROUSHcharger®, , , **ROUSH**, , “ROUSH® Stage 1”, “ROUSH® Stage 2”, “ROUSH® Stage 3”, “428R®”, “27R®”, “Trak Pak”, “P-51A®”, “P-51B”, and “ROUSHcharged” are the trademarks of ROUSH Performance Products, Inc., or its related entities.